

Life Path

Ascendant In Gemini

PROFESSIONAL - LIFE-PATH: Developing the mind

You are a knowledge-hungry person, eager to travel and meet people in your career. During the course of your life you will develop your communication talents, therefore you need a job which makes demands on your persuasive abilities and sociable nature. It is important for you not to feel tied down, and you need to have the freedom to explore and investigate ideas. You would make an excellent teacher, as you love to impart information to others. As you have a particular interest in learning about the nature of the mind, you are best suited to a career with mental challenges which gives constant variety and change, as well as the possibility of developing your mind. You are especially good at building up a network of connections, and keeping contact with people.

PERSONAL - LIFE-PATH: Developing the mind

Your nature is infused with a youthful curiosity and a restless desire to be stimulated mentally and socially. Mental development is alpha and omega for you, and meetings, discussions, books and learning are the stuff of life. You are constantly active and spread yourself very thin, tending to have a superficial knowledge of a vast array of things, and a finger in many pies. Other people will challenge you to show greater depth and thoughtfulness in your attitude to things instead of just skating over the surface. Brothers and sisters may play an important role, both in your development as a child and later on in life. Your school years will have a profound effect on you, and set the trend for an interest in education later in life. Because you like to be on the move, transport is as essential to you as the air you breathe.

Ascendant Conjunction Mars

This aspect is extremely powerful in your horoscope; every action you take will be coloured by this energy.

This connection between two planets shows a fusion of two principles for good or ill. You integrate quite different energies and express them as one process. This manifests as a strong personal character trait.

PROFESSIONAL - LIFE PATH: Undiluted force

You display a rugged personality, and invest energy and enthusiasm in everything you do. An aggressive or overly defensive attitude brings out a competitive attitude in others. This will lead to a number of professional conflicts. You are ever willing to take up the battle. Nevertheless you are effective in action as long as you are given the freedom to decide things for yourself. You are a good general, but a bad diplomat.

PERSONAL - LIFE PATH: Undiluted force

You create a forceful impression, and people have a tendency to be somewhat nervous when they are around you. Those who know you well will appreciate your forthrightness, but the meek and sensitive will avoid your company - not that you care. You are headstrong, reckless and therefore rather prone to accidents. You are basically frank and honest, so people know where they stand with you.

Mercury In Aries

PROFESSIONAL - MENTALITY: Inspire others to action

You are a quick-thinking person, often coming with inspired ideas which you like to put into practice immediately. Other people will notice the breathless pace in which you express your ideas. You show impatience when you are not understood. You work best at the centre of a lot of activity where you can think independently and take rapid decisions. For you to learn effectively you have to discover and try things out for yourself.

You are good at inspiring others, but not so good at listening sympathetically for long periods of time. Planning is probably not your cup of tea, but initiating contact with others is. You like giving pep-talks, but you get restless when meetings or negotiations drag out.

PERSONAL - MENTALITY: Inspire others to action

Your mind works fast, but you have a tendency to express yourself in a hurried manner. This can stress other people a little so remember to give them time to follow your train of thought. You can miss important messages because you tend to jump to conclusions or finish other people's sentences for them. Nevertheless you can be very witty and fun to be with. Perhaps you were rather cheeky as a child - and you probably still express yourself impulsively. You are often quite sharp, and prefer to serve the truth in an unvarnished fashion. You may however feel that you have a monopoly on the truth, and you often show considerable irritation when criticised or corrected. When you learn to give other people a hearing, and to prepare your ideas better, you can become a leader in your field.

Mercury In 12th House

PROFESSIONAL - MENTALITY: Mental communion

You have some unusual mental abilities because you are able to harness your intuition and tune in to signals and ideas which other people are not sensitive to. You function best in situations where you can have a low profile mentally and operate behind the scenes with your ideas. You appreciate having the mental privacy to get on with your business without being disturbed. Being sensitive to mental pollution - the gossip, chattering or superficiality of others - you withdraw into the world of your own imagination. Here you can think up many ideas and projects which can bring professional success - particularly in connection with marketing, advertising or the media. You may also have artistic, creative or musical abilities.

PERSONAL - MENTALITY: Mental communion

The private world of your mind and your thoughts is very important for you. Perhaps as a child you were forced to retreat into your own fairytale world - at least now you can be quite happy with your own company. You are the type who keeps a private diary in which you commune with yourself. In partnership matters it is important that your loved one allows you to withdraw from time to time - but at the same time there will be a lot of misunderstandings - not to mention a growing isolation - if you do not take the trouble to reveal a little of what goes on in your mind. You have a number of spiritual talents - your mental receptivity means that you can derive great benefits from walks alone in nature, and you may even be open to some form of spiritual communication. Poetry, music and art can also be wonderful areas of refuge to you.

Identity

Sun In Taurus

PROFESSIONAL - IDENTITY: Stabilise your foundation

The main issues in your life centre around building up a strong sense of self-worth. In career matters you would be happiest with a stable job and a regular income. Attaining a stable sense of self and building up a set of personal values that stand the test of time is priority number one. This may well manifest in a material way, but this is mainly because you have the ability to both appreciate, enjoy and administrate the material things of this world. Because you have a fine appreciation of quality, this will naturally be reflected in the things you acquire. When you function well professionally people will see you as a person who they can rely on and count on for support. You are patient and determined, and you know how to consolidate your position after you have achieved a goal. You are extremely good at

maintaining gains, once they are achieved.

PERSONAL - IDENTITY: Stabilise your foundation
Basically you seek stability and security. However some of the greatest testing times of your life come when your values change and periods of instability arise. These periods will often be accompanied by the need to lose or give up something to which you are extremely attached. Your fate is to understand the very nature of attachment and yet develop greater flexibility in the face of gain or loss. Partnerships can be affected by your inertia as regards the need for renewal and change. When your self-worth is reflected by inner values which can never be lost, you become a tower of strength for yourself and others. Other things being equal you can build a wall of security around your loved ones. However you may have rather fixed ideas and principles, and you rarely allow yourself to be influenced. When those around you desire change, this can create a good deal of frustration.

Sun In 12th House

PROFESSIONAL - IDENTITY: Dissolution of ego
You have the capacity to take on many roles in your life, assuming the professional guise which is expected of you under any given situation. Whatever kind of success you have, you experience difficulty truly identifying with or believing in your role. It is not easy for you to take ambition and striving seriously because you are rarely inspired by the allure of power, prestige or material goals. You seek a sense of personal significance and meaning in your life, and personal glory does not give you this. You would experience greatest satisfaction in a role in which you can express your concern for others, or in a job which allows you the peace to commune with your own feelings - perhaps a creative job of some sort. You work best when you are undisturbed or can operate behind the scenes or removed from society in some way.

PERSONAL - IDENTITY: Dissolution of ego
You have the capacity to take on many roles in your life, assuming the professional guise which is expected of you under any given situation. The greater part of your life is spent in a search to find or define your identity. As a child you probably felt a sense of isolation, and in relation to your father you may have felt that he was remote, a dreamy figure who was difficult to get into contact with. Later in life you also personally feel a sense of remoteness and often find that the goals you pursue lead to disappointment or a sense of meaninglessness. This inner dissatisfaction motivates you to go on an inner journey to understand the nature of yourself. You can find meaning when you withdraw from the world for a period of time - too much contact with others for too long can be confusing for you. You would benefit greatly from meditation, because a spiritual practice or creative work enables you to reach the core of your being. When you are there you discover your place in the cosmos, and the cosmos's place in you. For you to truly find yourself, you must lose yourself. You can discover the interdependency of humanity and the universe.

Sun Sextile Uranus

This aspect is extremely powerful in your horoscope; it will dominate many areas of your life. When reading the following description, please bear in mind that you are a fast learner and overcome any difficulties involved very quickly. You can expect to use this aspect constructively and harmoniously.

PROFESSIONAL - IDENTITY: Consciousness change
Your chief contribution to society is your ability to entertain original ideas and experiment with new ways of doing things. You need to work in an independent position or with a company which respects and encourages your originality. You quickly become bored if you have to perform the same functions day in

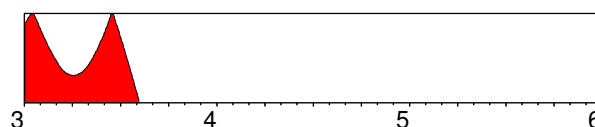
day out. You need to meet people - and you thrive on unusual challenges, especially if they involve travel and dealing with radically different cultures. You may travel long distances to exotic countries, or work with advanced technology. Alternatively you will go your own unique direction in your professional life, developing unconventional talents - perhaps connected with consciousness development in one form or another. You are not one to stand on ceremony either - you hate stuffy protocol and thrive on contacts with young and old, rich and poor. It is your job to pave the way to the future with new ideas and an original life-style.

PERSONAL - IDENTITY: Consciousness change
You are a true individual and other people may regard you as rather eccentric. You like to express yourself through actions which surprise others in some way, and you enjoy embracing ideas which are provocative. You do not like to feel tied down, and function best in a relationship which gives you a lot of personal freedom. Often your friends will seem more important than your family, and as a result partners can feel that they are unable to establish an intimate contact with you, though you are usually quite open and fair-minded. During certain periods of your life you will choose to change your direction radically. These personal revolutions are often accompanied by new interests of an untraditional nature - for example astrology, electronics and technical matters, or mental powers. You have an electric and rather unstable aura around you, and often your nerves are on edge. People feel uncertain around you as they feel that anything can happen, so you would be wise to put them at ease about your intentions.

IDENTITY - IDENTITY: Consciousness change
Your father was probably unusual in some way, and he will have brought a sense of unpredictability into your life - perhaps because he travelled a lot, perhaps because he was an outsider in some way, or simply because he acted irrationally so that you never quite knew what he would do next. You may have had a friendly - not fatherly - relationship to him, or you may have felt totally alienated. Whatever, there was an aura of tension or excitement in your relationship. Later in life this evokes a need for you to develop unconventional habits and be different in some way. Moreover, you can adopt a rather distant attitude to your feelings. At its most extreme, there can be a lack of grounding with very little sense of contact with the physical body, and far too much mental activity. Success in your life depends on you coming down to earth with your visions. Factors in your upbringing can lead you to feel that you are an outsider. Actually you would prefer not to run with the crowd, so why worry about being different? This feeling can be utilised positively by helping people who feel they are outsiders.

Jupiter Transiting Square Sun

01-01-2003 -> 05-08-2003



This is a time of tension and dramatic change which may be most apparent in your domestic life, or in your career. Use the time to make much-needed changes.

PROFESSIONAL - IDENTITY: Creating your future
During this phase of rising self-confidence you can expect your plans for expansion to take off. You should be thinking positively about the future now, visualising how you would like things to be as vividly as possible. Your power to get what you want is at its highest, so start expounding your visions of a bright future. Remember: you get what you focus on, so focus on what you want.

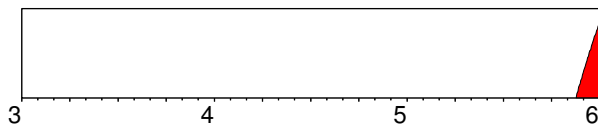
It is favourable to expand into foreign countries; higher education, public relations and insight-enhancing projects will also bring success. Whatever you do, it is essential that it has depth and meaning for you. Don't waste important time on trivial matters - success is about the quality of life and making an impact with the essence of your own identity. If necessary take time off from work to build up a new vision for your future. If you have any legal problems, you will be confronted with them now so ensure that you are morally unassailable. And don't overestimate yourself and your capacities. Make sure your plans are within the boundaries of reality.

PERSONAL - IDENTITY: Creating your future
During this phase of your life you will be given the opportunity to find a new sense of meaning in your existence. Bubbling up from within, you have the chance to release a new energy and enthusiasm based on a sense of your personal relevance to this planet. Travel abroad and contact with people you respect for their intellectual and spiritual capacities will now expand your world-view. Knowledge and understanding will enable you to build up a broader moral base with greater insight and tolerance.

This is a very favourable time for religious growth if you are so inclined, or philosophical and intellectual insight. In many ways the world opens to you and reveals its gifts and blessings for you to enjoy. Take care as you sample the pleasures of this cornucopia and don't overestimate yourself - personal hubris will be punished and you may find yourself coming down to Earth with a bump.

Jupiter Transiting Opposition Sun

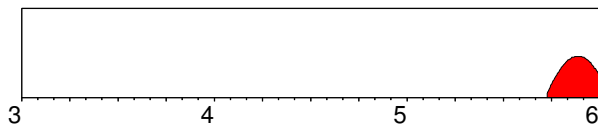
20-11-2005 -> 31-12-2005



Please read page 5: "Jupiter Transiting Square Sun"

Saturn Transiting Square Sun

25-09-2005 -> 31-12-2005



Major irritation factors arise as a result of this influence, yet if you use this period to initiate dynamic change you will be able to make dramatic progress in your life.

PROFESSIONAL - IDENTITY: Long-term strategy
You can use this period to rise to the many professional challenges in your life and create the foundations for lasting growth. This is no easy time; many difficulties arise and you will have to work harder and shoulder more responsibilities. Authority figures make demands on you, seemingly without giving you any recognition. If you try to avoid commitment now, you are likely to be dogged by worries and problems. Your self-confidence may be low, and you may feel that you cannot live up to the expectations of others. Time will show that you can overcome difficulties and achieve goals.

Planning and strategy is of the essence, and it pays to plan months ahead and to tighten up schedules, working to realistic deadlines in a committed manner. By completing your work in stages and dividing large projects into smaller sections, you will find that you can handle enormous responsibility. You will not get something for nothing now, but hard work will be rewarded in the long term, so roll your sleeves up and get down to it.

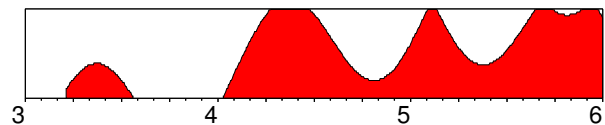
PERSONAL - IDENTITY: Long-term strategy

At the beginning of this phase you will probably not be feeling so good about yourself. You may feel that you do not get enough - or don't deserve - recognition. There is a strong inner feeling that you must pull yourself together and do something worthwhile, and the sooner you do this, the better you will feel. There is a general feeling of being weighed down by burdens, and there may be a lot of pressure to live up to the expectations of others.

It is time to take responsibility for your own life and to define new goals, whilst you can send a strong signal to other people - parents in particular - that you can look after yourself. By rising to the challenges of the time, you can develop a strong inner feeling of self-satisfaction, based on the results that come from hard work and effort. You will be facing central issues concerned with identity and self-sufficiency, and will emerge from this period as a stronger and more self-reliant person.

Neptune Transiting Square Sun

20-03-2003 -> 31-12-2005



Major irritation factors arise as a result of this influence, yet if you use this period to initiate dynamic change you will be able to make dramatic progress in your life.

PROFESSIONAL - IDENTITY: Refining the spirit
As this is a period of self-examination and contemplation, you may not be very motivated professionally. You cannot allow yourself to be the slave of your ambitions now. You have to ask yourself the question: How can my job live up to my long-term ideals about myself and my capacities as a human being? The yardstick as to whether what you are doing is the right thing is the inner feeling of dissatisfaction that wells up from within. Let this guide you in your search for meaningful activity.

The direction you take now is decisive for your long-term spiritual health, so take your time. Knowing what you don't want to do is an important first stage, later you will find something which satisfies every part of your being. This is a time to create room for musical, artistic or creative impulses. You interest in fellow men and women may inspire you to be more socially involved. The urge for service and even sacrifice is strong.

PERSONAL - IDENTITY: Refining the spirit
This is the most important time in your life for spiritual growth and self-realisation. At the onset of this period you may feel a dissatisfaction - even a pointlessness - with your existence. No matter what escapist activity you pursue, there is a nagging feeling of meaninglessness which pervades all areas of your life. You have to take the consequences of this and seek to enrich your daily life. Spiritual interests and meditative or creative activity are favoured now, and you would benefit from contact with a person more spiritually aware than yourself. No partner will be able to alleviate your thirst for existential significance now. Unrealistic expectations concerning loved-ones will surely lead to disappointment, as the bubbles of your private illusions burst. By directing your gaze inwards and understanding the subtle inner processes of the mind, you can achieve a new understanding of your life. The essence of this is that you are alone, and that the world is a stage for your projections. It is important that your acting is good if you would like some applause when you get to heaven.

Emotions

Moon In Aquarius

PROFESSIONAL - EMOTIONS: Caring humanity

You are a very socially conscious person, strongly motivated to create cohesion in groups. Paradoxically however, you often feel on the fringe as far as your relationships are concerned. You have a taste for unusual environments and function best when you consciously choose alternative relationships where people's differences are more apparent than their similarities. This gives an attraction to foreign environments or experimental life-styles. With your natural friendliness, deep social commitment and group consciousness you will have a special ability for working with people on the social fringe. You have a striking intuition, and may have talents for an unconventional profession.

PERSONAL - EMOTIONS: Caring humanity

You were brought up in an unusual parental environment characterised by rather special family relationships. You probably learned at an early age that it did not pay to be too dependent, and neither does it suit you, as you prefer friendships based on equality and shared interests. As such it is likely that your family relationships were characterised by intellectual principles of equality or liberation, whilst you may have missed the emotional supportiveness most children take for granted, although you may well have had a very friendly relationship to your mother. As many of the deepest bonds in your life are to true friends or groups, some of your greatest difficulties are experienced when these attachments are broken.

Moon In 10th House

PROFESSIONAL - EMOTIONS: A caring career.

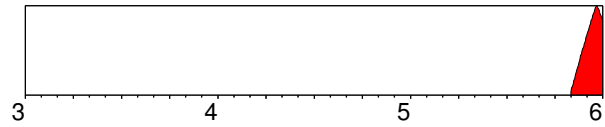
Your career will involve you deeply emotionally and to some extent can be a "home from home". You make important emotional bonds to people you work with, and may find yourself playing a significant public role because you are very sensitive to the public's interests. You may also have a talent for dealing with products of the land or with housing. Your mood is strongly affected by the many ups and downs that you experience professionally. This professional sensitivity is an advantage when you cater for the needs of society, nourishing people with your concern, but it could be wise to develop a certain emotional detachment, so that you feel less vulnerable. Your mother may play an important role in your career, and elder successful women will inspire and support you.

PERSONAL - EMOTIONS: A caring career.

Your mother had a profound effect on your personal development and you probably still look up to her, or see her often. She was most likely the dominant parent and will have influenced you strongly in your choice of career. A lot of your unconscious professional motivation is aimed at living up to her expectations. Later in your life partners will find themselves competing with either your job or your mother for your attention or your affection. But you have a strong sense of duty, and you may feel that your role is primarily to live up to family expectations. Having children really mobilises all your resources, and you will make a good parent, but true fulfilment will be found when you can manifest your caring energy beyond the limits of the family.

Jupiter Transiting Square Moon

02-11-2005 -> 31-12-2005



Major irritation factors arise as a result of this influence, yet if you use this period to initiate dynamic change you will be able to make dramatic progress in your life.

PROFESSIONAL - EMOTIONS: Expanding your base

This influence depends very much on how large a role safety and security play in your professional life. If safety is paramount, you will be wanting to expand the foundations of whatever represents security for you now. As this may well be property, you could wish to move into a larger home or business, and indeed it certainly pays to invest in land and buildings now. Providing that you can trust your instincts in these matters, then property acquisition or expansion is favoured.

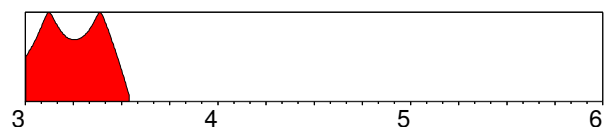
For some people freedom and expansion of horizons will be more important than security. The urge to investigate foreign countries - their people and culture - can play an important role in your career now. Trust in your hunches - your intuitive powers are at their highest in this period, and you have the enthusiasm to take on any challenge. You may however find that your interests lie outside the professional sphere. This is a higher-charged period for you emotionally, so you will probably also want to expend your energies on domestic or family matters.

PERSONAL - EMOTIONS: Expanding your base

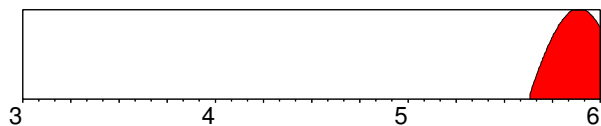
This is a period when your feelings and emotions exert a tremendous power in your life. Hopes and dreams about the future will be a driving force inspiring you to take action. Generally speaking you should have a degree of luck and good fortune in attaining your greatest dreams at this time. This is probably a natural consequence of the enthusiasm you invest in all matters. You can expect an expansion of your horizons and a deepening of your capacity to show feeling. You learn something of the mystery of life, and it gives a new meaning to your existence. You can be strongly inspired by a future vision connected with domestic happiness, a home or children. There is, however, a tendency to go overboard. If you are hoping for the fulfilment of emotional dreams, so many opportunities can arise that you simply cannot make a choice. Furthermore your emotional suggestibility is at its highest - you believe what you want to believe. Whatever the concrete results - if any - of this period, you will come into deep contact with your emotional power and gain rewarding new insights.

Jupiter Transiting Opposition Moon

01-01-2003 -> 17-07-2003



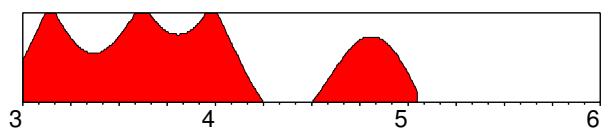
Please read page 6: "Jupiter Transiting Square Moon"

Saturn Transiting Opposition Moon**21-08-2005 -> 31-12-2005**

Very strong tensions will occur in your life in the following area. Other people will impinge on your life and force you to adjust.

PROFESSIONAL - VALUES: Emotional self-sufficiency
Issues of economic and job security become very pressing at this time, and you will feel a strong drive to overcome any weaknesses in this area. You can however expect a lot of difficulties, especially if you indulge immature expectations, or rely too much on others. Childish behaviour gets you nowhere now, and if you do not have conscious control over your emotional reactions you can expect to be unpopular. The atmosphere in your working environment may be rather heavy now - perhaps because of an elder woman who is trying to assert her authority. The more mature you are, the better you can handle trying situations. You have to know when to set limits, whilst still living up to your responsibilities. You can develop the self-discipline and patience to work with people in difficulty, if you choose to.

PERSONAL - EMOTIONS: Emotional self-sufficiency
During this challenging emotional period you will become more mature and self-sufficient. But this is not normally a happy time partly because safety and security is no longer what it was. You have to spend time building more secure foundations for your life, and you cannot expect anyone else to be very supportive during this time. It is up to you to shoulder responsibilities uncomplainingly and with dignity. Time can drag on now because you have to spend more time attending to everyday details and getting things to function on a practical level. On an inner level you are confronted with the need to change or control unconscious emotions and habits. It is no use allowing your temperament, your jealousy, your distance or your stubbornness to get in the way of a rewarding relationship. The time demands emotional self-improvement, so stop making excuses and start working on yourself.

Neptune Transiting Conjunction Moon**01-01-2003 -> 19-01-2005**

You can expect powerful change in this area, as you learn to integrate the following influence into your life.

PROFESSIONAL - EMOTIONS: Refining emotions
This is a wonderful time for the stimulation of fantasy and the imagination - but not a very good time for the pursuance of serious ambitions. Your emotional sensitivity is at its peak at this time, you can be easily hurt and very easily upset by negative influences in the environment. If you are working on an emotional or environmental level however - and this is a good time for such interests - you can expect enhanced awareness and ability. This is an excellent time for greater consciousness of, and respect for, Nature. Intuitive and spiritual abilities can be trained and refined. Probably you feel a good deal of discontent now, perhaps because of dissolution or distractions on the domestic front. If conditions are difficult, remember that acceptance is more effective than action. You can learn a lot by giving greater attention to your emotional needs, so do not ignore inner feelings, even if they seem unpleasant at first glance. Your

primary job is to enlarge your emotional spectrum and cultivate greater interest and identification with the emotional processes other people are undergoing.

PERSONAL - EMOTIONS: Refining emotions
During this period you have the opportunity to get into contact with emotional states you have ignored for a long period. Feelings well up to the surface and you experience an indefinable sense of dissatisfaction, without being able to put your finger on the precise cause. You may give voice to complaints about being unfulfilled, or disappointment with yourself or your partner. By turning within at this time, you can create a many-faceted foundation for future satisfaction. What is really happening is that you are becoming aware of new emotional needs which you must express to enrich your future life. The first stage is dissatisfaction, the next is taking action to express your feelings. This can be done by cultivating a spirit of service towards others, in recognition that all people have their inner sorrows. You may also wish to commune with nature, to develop your spiritual practice or be more creative, especially musically. It is no use expecting your partner to fulfil these inner needs now - if you do, disappointment is guaranteed.

Mentality**Mercury In Aries**

Please read page 3: "Mercury In Aries"

Mercury In 12th House

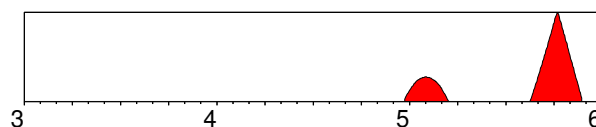
Please read page 3: "Mercury In 12th House"

Mercury Square MC

This aspect is extremely powerful in your horoscope, and will be a major feature of your character. There will be great difficulty in integrating these two planetary influences, and the promised harmonious results will only arise after you have expended time and effort.

PROFESSIONAL - GOALS: The ideas person
It is important for you to integrate your mental faculties in your career. Teaching, dealing with communication, writing, meeting people and generally creating contacts are all part of the employment spectrum for you. An inner restlessness will ensure that you either seek a career with a variety of interesting functions, or change jobs at regular intervals. The important thing for you is to get your ideas across in society.

PERSONAL - GOALS: The ideas person
You like to have your finger in a number of pies, and although this can be manifested as versatility, you have a tendency to be easily distracted from your personal goals. Changes of views and a restless nature may mean that you move often. A stimulating atmosphere - both at home and in your work - is a prerequisite for personal satisfaction. Children, chatting and play can keep you happy all day.

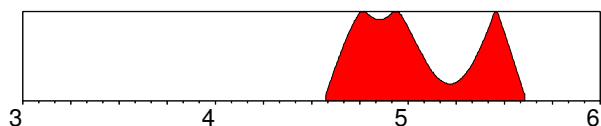
Jupiter Transiting Opposition Mercury**24-12-2004 -> 24-11-2005**

This extremely strong influence can bring change, dilemmas or separation. The likelihood of travel in connection with these issues is strong.

PROFESSIONAL - MENTALITY: Expanding contact
The effect of this influence depends very much on how you employ your mental talents in your profession. This is the time you should invest in your mental abilities. Knowledge is power, so it could pay for you to go on courses, meet people and expand your sphere of influence. You can expect an increase in the time you spend travelling now, so try to streamline this area of your life. You should be doing more to enlarge your network of contacts, so make sure you are available through telephone, fax or computer. You will talk more, travel more and write more. If you have any dreams as regards writing or getting some message across to the public, now is the time to go for it, as there is a strong disposition for success in these matters. This is generally a great time for wheeling and dealing, doing business and capitalising on contacts at home and abroad. Nevertheless you can talk too much and be too intellectually pushy. Take time to listen to the opinions and advice of others - you can make misjudgements if you don't.

PERSONAL - MENTALITY: Expanding contact
This is a period of expanding intellectual curiosity which can be reflected in many areas of your life. You will probably devour books and TV programmes at this time to satisfy your urge to acquire knowledge. It will also be an important process for you now to weave all the threads of information that you gather into a whole piece of cloth, so that you can see a meaningful pattern in all the details that surround you.
This is a time to be on the move and to allow your mind to be fertilised by contact with a wide variety of people with different views on life. You should be bubbling with ideas, so you have to get them down on paper or out to a broader public. Although this is generally an optimistic period, there is a risk of losing your sense of proportion, particularly if you are inclined to worry or fantasy. Knowing the power of the mind to create the future, you would be well-advised to guide your thoughts into constructive channels.

Saturn Transiting Square Mercury 29-07-2004 -> 11-08-2005



This is a time of tension and dramatic change which may be most apparent in your domestic life, or in your career. Use the time to make much-needed changes.

PROFESSIONAL - MENTALITY: Mental self-discipline
You are challenged now to get organised and to administrate your time sensibly. There is a particularly emphasis on improving and consolidating your talents. Long-term plans for training courses or intellectual improvement can be put into effect. Writing or communication blockages must be overcome. You can develop the necessary mental discipline now to attain your goals. Expect communication problems, and expect plans or travel arrangements to be delayed. There needs to be far more attention to detail. Attend to the small print when signing contracts.

Learning to economise with your words and messages is an essential lesson for this period. How can you express yourself most effectively in the shortest possible time? If you develop the self-discipline to organise your daily life so that you can attend to mental challenges, you can expect very satisfactory long-term results. There is a strong emphasis on business matters at this time - but many minor irritations. Take one problem at a time, be patient, and solve challenges with long-term strategies.

PERSONAL - MENTALITY: Mental self-discipline
This is a period in which you have more than the average

amount of worries. There are many practical issues to be solved, and there is no other alternative than to get down to each issue and concentrate on one thing at a time. It is important to organise your time more efficiently. Problems particularly arise in the area of communication. This is the time to address these issues and find practical solutions.
If you feel unsure of your intellectual abilities or that you lack the necessary training to do what you want, then you should make a commitment to improve now. You need to spend more time talking and listening to your partner - there are issues which need to be solved. Problems can also arise in connection with sibling relationships or neighbours, and if you are patient and diligent you can find long-term solutions. Discipline your daily life and realise creative dreams.

Values

Venus In Aries

PROFESSIONAL - VALUES: Independence
Personal freedom and honour are far more important values for you than material acquisitions or high social status. You enjoy taking risks, and are stimulated by the excitement of meeting new people. You do not allow yourself to be influenced by others in your judgement of people. Women with this position will be very independently-minded, very rarely allowing themselves to be put in a position where they can be pushed around by men. As a woman, you may scorn traditional concepts of femininity, and will actually enjoy fighting your way up in a competitive career, and as a man you will be attracted to a competitive woman.

PERSONAL - VALUES: Independence
Men with this position will be attracted to the independent female, enjoying the mutual freedom such a relationship gives; women like to see competition for their favours, and abhor dependence in a relationship. With this planetary position you will value honesty and directness - yet there is a romantic innocence which borders on naiveté. You are not the type to play your cards close to your chest, preferring a direct confrontation when sorting out misunderstandings. Both men and women have a tendency to form hasty attachments and regret at leisure. Both sexes appreciate a challenge and an element of excitement in a relationship. Dynamism and action are important ingredients in the balanced relationship.

Venus In 12th House

PROFESSIONAL - VALUES: Spiritual devotion
You are a romantic at heart, and would function well in a job which gave you the opportunity to express your aesthetic sensitivity. You are undoubtedly a very giving and devotional type, and these qualities can be expressed in many ways. On the one hand you may wish to find a channel for your compassion by giving your services to people in need of care. You may also have creative talents in connection with the arts or marketing because you know what has subliminal appeal to the broad mass of people. And you may prefer your own private, inner world where your aesthetic qualities can be expressed for your inner benefit alone. Although you may experience material benefits from your work, this will not be an important motivating factor. Inner satisfaction is far more important for you.

PERSONAL - VALUES: Spiritual devotion
You have a deep longing for a meaningful love relationship. It is not the sexual or material benefits that are important so much as the need to experience a form of spiritual communion or ecstasy. In your pursuit of romantic ideals you have a tendency to imagine qualities in the partner which he or she does not possess. Of course experience will divest you of your illusions,

and you may be afflicted by a feeling of disappointment in your partner. If you indulge this feeling too much, your partner will begin to feel unsure or unhappy, and become isolated in relation to you. Women with this influence often have a tendency to become involved in love affairs in which they are the courtesan - wife number 2. Obviously such a relationship allows one to indulge the illusion that if the man left wife number one, then everything would be rosy. This of course never happens, or if it does, how can one then maintain the precious romantic illusions? Men too have the longing for the ideal love - but only through spiritual devotion can these deep longings be satisfied.

Venus Square Uranus

This aspect is extremely powerful in your horoscope, and will be a major feature of your character.

There will be great difficulty in integrating these two planetary influences, and the promised harmonious results will only arise after you have expended time and effort.

PROFESSIONAL - VALUES: Untraditional relationships

You need to work in an exciting environment where you are together with people who have untraditional ideas, or who come from unusual cultures or backgrounds. You function best when you meet a number of different people during the course of your working day - preferably interesting or unconventional types.

You have a talent for working with the media - you may also function well in a job which brings travel to exotic places. As you have a strong interest in consciousness-raising groups you may get involved with political, spiritual or social movements. You function well in a team - but not in a conventional working environment where you meet the same people all the time. You need to feel as free as a bird. You have a talent for making friendships - you make an electric impression on others, but actually you are rather detached yourself.

PERSONAL - VALUES: Untraditional relationships

The major characteristic of your love-life is your need for excitement and the unpredictable, coupled with a restlessness which you feel when relationships do not offer you the opportunity for personal development. You have a tendency to form relationships to people from foreign countries, different cultures or unusual environments - in other words with a person who can bring an element of the exotic into your life. Often you can find yourself in a situation, in which you choose not to actually live together with a partner. Preferring to keep your independence - especially as regards the freedom to have your own friends - you maintain the excitement of romance by periodic meetings where you can constantly have your need for excitement fulfilled. In extreme cases you experience "airport-love" - short but exciting relationships with someone from another area of the world. In this way you avoid committing yourself emotionally. If you want a more permanent or stable relationship, or if you would like to feel more secure with your loved-one, it is essential to make a deeper emotional commitment.

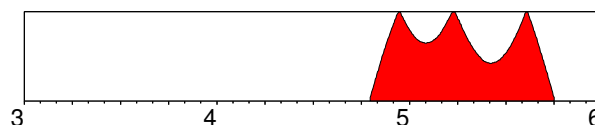
LOVE - VALUES: Untraditional relationships

You have a rather original attitude to relationships which probably comes from early experiences of the relationship between your parents, or perhaps an unusual connection with a sister, or an unconventional bond to another female. The upbringing may be characterised by mixed messages as regards your own sexual identity - daughters perhaps encouraged to develop a masculine style and sons a feminine. Your parents' love-life may have been characterised by sudden separations; at least something in your upbringing has evoked a tendency in you to be very detached and rather cool in the expression of love. You instinctively anticipate a sudden break of emotional bonds, and learn at an early age to go your own way.

Later in life this inability to commit yourself fully to an emotional bond creates distance in your love-life. You send the unconscious message that you can do without the partner, and this in itself can lead to the sudden separation you inwardly are trying to avoid. If a potential partner does not experience commitment from you, he or she will go elsewhere. Your romantic signals also attract people who have no intention of committing themselves and imagine they can have an "enlightened" (non-committed) relationship to you. By cultivating exciting social bonds to interesting people, you can satisfy the need for stimulation which one relationship cannot provide by itself. It is not your fate to be bound by traditional concepts of marriage - you can show by personal example the many alternatives that exist to conventional relationships.

Jupiter Transiting Opposition Venus

19-10-2004 -> 02-10-2005



Very strong tensions will occur in your life in the following area. Other people will impinge on your life and force you to adjust.

PROFESSIONAL - VALUES: Blessings

If you are the lucky type, you could not have a better period than this one. This is a time when influential people - particularly women - can guide you towards success, and when your economic resources have every chance of expansion. Success comes in particular in the cultural, intellectual or artistic field, though there is also a reasonable chance of business expansion also. Matters of fairness and justice will cause concern at this time.

It is more important to enjoy life than just work hard at this time if you can't appreciate life's pleasures now, when can you?

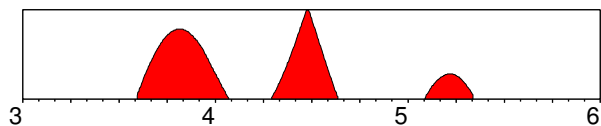
What are your true values and goals in your career? This is the time to include them in your plans for the future. However, if you indulge your pleasures too much, this can be an expensive time. You are very vulnerable morally now, and affairs of the heart can lead you into a costly blind alley. Don't cut corners to gain easy profit, a questionable gain now can lead to long-term loss. You are easily seduced.

PERSONAL - VALUES: Blessings

This is a romantic period par excellence, so you can expect affairs of the heart to have priority now. If you are in a relationship, your need to give and receive love will be very strong, so ensure that you indulge your emotional and erotic desires. This is a time when the power of romantic and sexual attraction is extremely strong, whilst the moral discipline is weak, so it is important to weigh the needs of the heart with other emotional costs. Sometimes it is more important to nourish and indulge the need for love than anything else, sometimes not. Let your ideals about fairness guide you. It is a great time to travel, and if you are seeking a partner, there is one to be found in foreign climes, or in cultural or intellectual institutions. You are not inclined to fall for anyone for physical reasons alone at this time - you need a partner who can stimulate you intellectually, and expand your understanding of life and its pleasures. If you are interested in creativity, this can be a wonderful period because you gain insight and understanding of the aesthetic forces of Nature, seeing the beauty inherent in all things, and experiencing that beauty as a manifestation of truth in some way.

Saturn Transiting Square Venus

07-08-2003 -> 04-05-2005



Major irritation factors arise as a result of this influence, yet if you use this period to initiate dynamic change you will be able to make dramatic progress in your life.

PROFESSIONAL - VALUES: Building self-worth
Economic issues come to the fore now, and you will probably find yourself having to work long and hard, perhaps without getting the financial rewards you would like. It pays to economise and save now, or to make very secure investments. By careful economic planning you can create the foundations for future growth, although short-term success is unlikely. Working on professional relationships may be necessary now, and you could be asked to make a long-term commitment. It would be to your advantage to pay more attention to subtle influences on your career, such as your appearance and personal style. If you want to open doors which have been closed for you until now, learn for example the finer points of diplomacy and overcome clumsiness or shyness in dealing with people. An understanding and appreciation of taste and style can be the keys to much desired status improvements.

PERSONAL - VALUES: Building self-worth
You can expect many challenges in your personal relationships now. How great is your commitment? Can your affections stand the test of time? No trivial relationship can survive this period, simply because you feel that you do not have the time to waste on romantic attentions that are not genuine. Those people who are in long-term relationships will go through a testing phase - the old clichés and protestations of love will not suffice any more. A recommitment may be necessary and more time should be spent together.
Love and romance do not come easily now - and indeed it is better to be alone developing inner self-worth and reliance, rather than seeking confirmation from love affairs. Assurance of love from others will definitely not be forthcoming now, so it is not worth wasting time on lukewarm relationships - you would be better off by yourself. It is a time for giving, but not for receiving. Contentment comes from an appreciation of quality, not quantity, and from what you have got, rather than what you have not got. This also applies to material things - it is better to do without, rather than long for things which in the last analysis will not truly satisfy you.

Drives

Mars In Gemini

PROFESSIONAL - DRIVES: Develop your mind
You are a person with many mental gifts and a very active mind. Your mind is like a sharp tool which can be used in many different areas, and you thrive when you are given several tasks to do at once. This love of diversity is only a disadvantage if you start too many things, and forget to finish them. Boredom is your greatest enemy in this respect. As long as a project has your interest you will keep at it. You are however not so good at following up on your successes, as you are more interested in ideas than in the results they bring.
You will almost certainly do a lot of travelling in your life - especially locally. Some kind of personal transport is essential for your well-being. Meeting people keeps you stimulated, and you probably have a talent for inspiring and teaching others. You must watch a tendency to be sharp or sarcastic - your intellect is a double-edged sword, and being a fast thinker

yourself, you have a tendency to get impatient with the slower pace of others. If you slowed down a little yourself and worked in a steadier fashion, you would make fewer mistakes and be able to consolidate your gains.

PERSONAL - DRIVES: Develop your mind
You are a quick thinking person, rather impulsive in self-expression, even to the point of being rude or cheeky. At the same time you can be humorous and witty and quite a success socially. Men with this position of Mars will be the roving type, always on the move either mentally or physically. In relationships this may also mean a roving eye and the tendency to flirt rather harmlessly. Women with this position will be attracted to the youthful type of man who is full of ideas and bubbling enthusiasm. There is a tendency - which may be more or less pronounced - to get involved in more than one relationship. There is a danger of being far too argumentative in relationships, perhaps because of an innate mental restlessness. Nevertheless relationships will normally embody an element of excitement and travel, which can be very stimulating for both partners.

Mars In 12th House

PROFESSIONAL - DRIVES: Inner struggle
It is not easy for you to feel motivated by your work, or to take your ambitions so seriously. You are not a competitive type - or at least you are half-hearted about taking up the fight, basically because you cannot see the point. You function best when you can work in your own space, without too much interference from others. You are not a team person and should find a position behind the scenes in some way. It is difficult for you to define what you really want to do. You feel most inspired when you can work for a cause - especially if you can help people in real trouble in society. Selfless service of this nature can inspire you, and you have a special talent for helping people with mental troubles. The essential element in your professional life is to be inspired by a collective ideal.

PERSONAL - DRIVES: Inner struggle
Many of the troubles in your life stem from the inner world of your imagination. Worries and fears often stem from early disturbing experiences in connection with a brother or a father. Because you have a very active imagination you can have a very real sense of being threatened by shadowy forces. You have to take care not to exacerbate these feelings through drugs, pill misuse or alcohol as you are simply oversensitive to bad vibrations. For women with this influence, dealings with men have a tendency to be affected by unrealistic expectations which simply invite disappointment. In sexual matters there may be a dream of a special kind of holy union and rejection of carnal desire. Secret sexual encounters in which you hope to realise this dream lead to confusion and chaos. This influence is best utilised in the search for spiritual understanding - but even here you need to ensure that both feet are planted firmly on the ground. Hard work for the benefit of others purifies your soul.

Mars Conjunction Jupiter

This aspect is extremely powerful in your horoscope, and will be a major feature of your character.
Two energies are unified into one in this planetary aspect, and you will express this energy in a very personal way, for good or ill depending on other factors in your chart.

PROFESSIONAL - DRIVES: Ebullience
You are a person with considerable optimism and energy, and your generally dynamic nature and positive attitude to the future will most probably bring expansion and success in your professional life. You are endowed with great courage and enjoy a challenge, so you would thrive in employment which gave you the opportunity to expand your horizons and travel.

There is something of the pioneer in you. As intellectual challenges are also important, you need mental stimulation and the opportunity to discuss issues and get important messages across. You can be very persuasive, but perhaps you also have a tendency to browbeat others. You have an almost religious zeal when it comes to convincing others about what is right and what is wrong. You may even see yourself as a fighter for justice, and whereas this ability to fight for a cause can be very useful under some circumstances, it can also lead to tiring conflicts and disagreements with superiors. Obviously, a job which utilises your energy, enthusiasms and deep convictions would be the best channel for your ebullient energy.

PERSONAL - DRIVES: Ebullience

You may well be an exciting person to be with because of your sharp intellect, optimistic nature and sense of fun. If you are a man, you will enjoy the company of your own sex, and be engaged in many activities, perhaps connected with sport or travel. You can excel in mental sparring contests and the thrill of debate. However there may be a tendency to pontificate, or generally make your opinions known in a rather dominating manner. Knowledge and understanding are strong motivating factors for you, so you like to sharpen your mind with discussion and involve yourself in cultural interests.

Women with this aspect are attracted to intelligent men, and often have attachments to foreigners. The most important motivation factor when choosing a man is his ability to expand her mental horizons - either through religious, political, philosophical or cultural interests. An intellectual watershed arises in the relationship, where the man is no longer able to satisfy the intellectual hunger of the woman. How this issue is dealt with is critical for the success of the relationship. The most important thing for both sexes is to take personal responsibility for ensuring constant intellectual or philosophical expansion and personal growth. Relationships would improve dramatically, if you were able to admit that sometimes you are wrong.

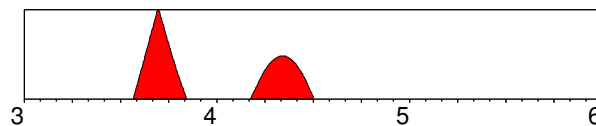
SEX & POWER - DRIVES: Ebullience

Male mentor figures have played an important role in the development of your intellect. If you had brothers, there will have been a lot of mental competition, and you may have felt that you had to struggle constantly to be able to assert yourself in comparison to them. Or alternatively your father may have been a very dominating man with strong opinions. At best this will have provided you with a very stimulating intellectual environment - at worst he will have been moralising, with a tendency to hold long monologues about what he believed in. He may have manifested strong convictions about justice and right and wrong. You too will have developed great sensitivity about injustice, and later on in life this can give you a tendency to feel a kind of righteous indignation when you perceive unfairness.

Women with this aspect like to have a man who can match her on a mental level - but ultimately he will not be able to, because she is the one who developed the intellectual muscles through the challenges of childhood. As a woman you will be extremely sensitive to men insisting on being right, and you will challenge their views. However this is a projection mechanism which wastes your energy, and ends up making the man lose his dignity.

You have a strong sexuality, and can experience great fulfilment through the sexual act. Other things being equal you have a healthy and fun-loving attitude towards sex. However you do need to have an intellectual respect for your partner, before you feel erotically attracted. Men with this aspect may be rather too demanding - even greedy - as regards sex, and under certain circumstances this leads to promiscuity. As a woman you will also have a strong sexual appetite, but sometimes unconscious projection mechanisms give you the impression that it is the man who is sexually demanding. Experience will show that this is not the case.

Jupiter Transiting Square Mars 28-07-2003 -> 01-07-2004



This is a time of tension and dramatic change which may be most apparent in your domestic life, or in your career. Use the time to make much-needed changes.

PROFESSIONAL - DRIVES: Burning enthusiasm

It is important for you to harness the energy and enthusiasm which surges through your body at this time. The competitive edge is sharpened, and you have the courage and vision to enter the rough and tumble of the marketplace and meet whatever challenge that confronts you. You can overcome obstacles now and expand your sphere of action. This is not a time when you can be too interested in diplomatic niceties - you want to get things done, and in a hurry. There is a burning desire to achieve.

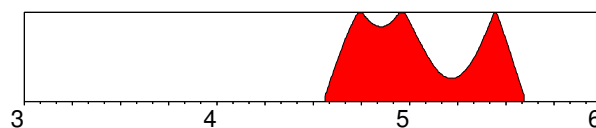
This is an excellent time for pioneering activities and expansion abroad. It is also a good time for throwing yourself into hard physical work. There is an inclination to get into confrontations now, and it is not helped by your desire to impose your beliefs and convictions on others. You may try to bully your way through. Although it is favourable to act on your convictions regarding what is right and what is wrong, it pays to gain insight first and cultivate greater tolerance.

PERSONAL - DRIVES: Burning enthusiasm

This is the time to be intoxicated by a new decisiveness and a willingness to invest your energy into getting what you want. There is a refinement of the sense of purpose and the meaning of taking action. This lust for life can manifest as an expanding of your horizons through travel, taking on new intellectual challenges, getting into your body through exercise and training and sexual exploits. There is a sharp increase in erotic drives at this time, and men will become increasingly aware of a need to prove themselves and their masculinity. This can manifest as the desire to woo and win the affections and body of a suitable quarry.

Women too become increasingly aware of sexual needs and the power of attraction to the opposite sex. There is a willingness to take the initiative in these matters. However it is actually the need to be stimulated intellectually that is paramount for women as far as attractions are concerned at this time. A relationship is also seen as a means to expand personal horizons and learn more about men and life in general. Indeed this period has most significance as regards insight into the body - and this includes greater consciousness concerning health, and the muscular system, as well as personal sexuality.

Saturn Transiting Conjunction IC 25-07-2004 -> 07-08-2005



Major changes will occur in the area of your life described here and you will integrate new personal behaviour and attitudes in your life.

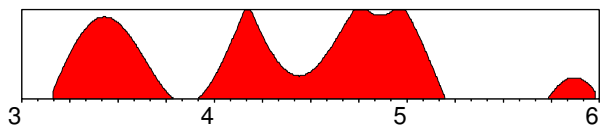
PROFESSIONAL - FOUNDATIONS: Developing backbone

This is a time of challenge both in your career and your domestic life, and success during this period depends on how much backbone and self-discipline you have. You can expect opposition from powerful and experienced professionals, and it

is probably best to strive to learn from, rather than combat them. This is a hard-working period, but try to stick to some limits as regards the time you spend at work. Home commitments should have priority now.

PERSONAL - FOUNDATIONS: Developing backbone
You will not be able to evade family or domestic responsibilities now, so you may as well accept the demands of the time. If you attend to the emotional needs of those who are close to you, everything else will function fine. Deal with issues concerning housing and security, as well as building matters. And more importantly demonstrate that you have developed the maturity to be independent of your own parents.

Uranus Transiting Square Mars 01-03-2003 -> 24-12-2005



Major irritation factors arise as a result of this influence, yet if you use this period to initiate dynamic change you will be able to make dramatic progress in your life.

PROFESSIONAL - DRIVES: Sparks
This is a dynamic and inspiring period, though not without an element of danger. You can hardly tolerate anyone telling you what to do now, so you are likely to experience conflict with those in authority. If there is trouble at work, seen objectively it is probably you who is being unreasonable. Your restlessness and desire for change hardly inclines you to compromise and settle in to some boring job now. You need excitement, independence, and a challenge. You would function better on your own now, especially if you could do some travelling internationally. If you have been dreaming of setting yourself up independently, this is the time to do it. There is very little fear of taking risks during this period, and plenty of energy to go it alone.

This is an excellent period for taking initiatives concerning change and renewal. There is a strong likelihood of long-distance travel to exotic destinations. Unconventional work is favoured, particularly in connection with New Age matters. However patience is low, and temper is high. This is an explosive cocktail which can make you more provocative than usual, so take care. You may be fascinated by mechanical or technical matters now, and this is a good time to develop talents in this area.

PERSONAL - DRIVES: Sparks
This is one of the most impulsive periods in your life, and you can expect a lot of excitement - or trouble - in these months. There is a resurgence of energy and a desire to break free and do something different. Feeling bored is like the ringing of an alarm clock, which is telling you to take steps to create a more stimulating backdrop for your life. People at this time are inclined to take risks - parachuting, karate, mountain climbing and similar activities exert an almost magnetic attraction. Women at this time are inclined to get restless in their relationships and be rather provocative. If unattached there is a tendency to get involved with a very unpredictable type of man who can bring an element of excitement into the life. Often there are meetings with foreigners or long-distance travel in connection with love.

Sexually this can be a time of dramatic awakening, partly due to a more experimental attitude towards sex. Though love-affairs may serve to galvanise the mind and body now, relationships are characterised by tension and periodic separation. Men experiencing this transit will also be restless, and have a roving eye. For men too, this is a good time for sexual experimentation. The urge for freedom tends to threaten

established relationships. To avoid sabotaging worthwhile relationships now, it is essential to find new challenges at work or exciting projects to undertake in your private life.

Wisdom

Jupiter In Taurus

PROFESSIONAL - WISDOM: Believe in abundance
Your talent for creating and maintaining growth coupled with your true appreciation of material values, stands you in good stead in the professional world. True, you have expensive tastes, and you may be extravagant - yet your conviction that money attracts money and that the world will abundantly provide, will normally ensure prosperity - unless there are strong counter-indications in your horoscope. Listen to your instincts in these matters - you know whether material circumstances can sustain growth, and whether to expand or play it safe. In business matters you are careful and reflective, and always willing to lean towards safety, rather than risk. You know how to give and receive solid advice.

PERSONAL - WISDOM: Believe in abundance
You were born in a year where there was a strong focus on the material resources of the world, and the consequences of and possibilities for growth. As such you have the ability to create the circumstances necessary for growth, and enjoy the material benefits of the Earth. By cultivating your ability to experience deep satisfaction - especially of a sensuous nature - you endow the things you touch with intrinsic value. You have strong and perhaps rather old-fashioned convictions and cling to them stubbornly. You may have a particular gift for tuning in to the body, and tapping the energy which lies within it. This can enrich your life both physically and sexually. Because you have a weakness for the good things in life, there may however be a tendency to overindulge yourself.

Jupiter In 12th House

PROFESSIONAL - WISDOM: Spiritual ballast
As you are person with a deep faith and many spiritual and psychological resources you can be of great help to people professionally through giving assurance, advice and support. People can be helped by your faith and ability to have a positive view in a difficult situation. You can work in a large organisation, especially if connected with humanitarian ventures, or with the general well-being of the population - for example with hospitals, welfare institutions etc. You are helped in your work by a deep belief in the qualities of mercy and the importance of service to humanity. You have a keen knowledge of the levelling nature of personal misfortune and the transience of worldly benefits.

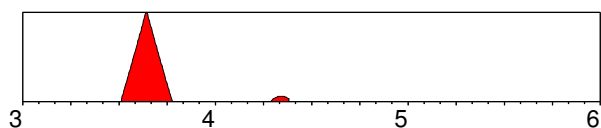
PERSONAL - WISDOM: Spiritual ballast
Some of the most rewarding experiences in your life come from the spiritual or creative insights that you are blessed with from time to time. For you the inner world of the imagination is richly populated with beneficent influences. It is obvious to you that faith can move mountains, and you can receive great benefits by drawing on your capacity to use this knowledge. Mobilisation of your capacity for positive thinking can bring you success, but your personal values are more spiritual than material. Perhaps you already have a strong religious faith, perhaps you are still on a spiritual journey to find meaning in life. The teachings you receive will enable you to greatly enrich the lives of others who are in spiritual distress. Care must be taken, however, to ensure that you do not foist your own opinions and convictions on others.

Jupiter Conjunction Mars

Please read page 11: "Mars Conjunction Jupiter"

Jupiter Transiting Square Jupiter

08-07-2003 -> 19-05-2004



Major irritation factors arise as a result of this influence, yet if you use this period to initiate dynamic change you will be able to make dramatic progress in your life.

PROFESSIONAL - WISDOM: Development of insight

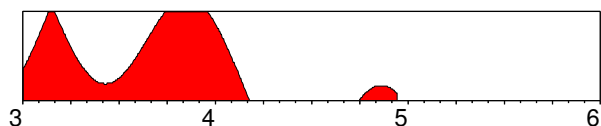
As Jupiter represents areas of your life in which hopes and visions for the future are paramount, as well as the need to gain understanding and meaning, you can expect an increase of awareness and activities in these areas now. If you are motivated by the need for expansion and growth, then you can expect advances. There is increased focus on your ability to act on moral values and pursue your convictions concerning society. This is the time to refine your judgement and manifest your capacity to guide and counsel others. If you have a tendency to overestimate yourself, indulge moral weaknesses or to make premature judgements, then you will be confronted with this side of your character now. If self-discipline and a natural carefulness is a part of your nature however, you can take advantage of opportunities to expand.

PERSONAL - WISDOM: Development of insight

Jupiter takes 12 years to go around the Sun, so it will return to its own position at the ages of 12, 24, 36 etc., and activate itself by major aspect every 2 years. During these phases of your life you can increase your insight and understanding, and plug in to that most essential part of your life which gives you a sense of purpose and meaning. It is at these times that you can rediscover your joy in existence and faith in the future. This in turn will enable you to be fertile and grow. However if you are the type who is over-confident or immodest, then you will learn a lesson at this time. Your hopes and visions for the future should be within the bounds of possibility, and if you do not keep in touch with the ground under your feet, you lose out in the long run.

Uranus Transiting Square Jupiter

01-01-2003 -> 11-12-2004



This is a time of tension and dramatic change which may be most apparent in your domestic life, or in your career. Use the time to make much-needed changes.

PROFESSIONAL - WISDOM: Journey into Space

This is a very dynamic period for the expansion of your horizons. There will often be long-distant travel to exotic destinations at this time, or increased contact with foreign countries. International contacts can prove valuable to your profession, and should be cultivated. During this explosively expansive period there can be considerable restlessness - you can hardly be satisfied with a desk job now, or any kind of education or training which does not offer an experiential curriculum. Surprising and unpredictable developments can arise - particularly in connection with legal matters; therefore care should be taken as regards contracts or commitments. You can use the energies of this period optimally by integrating

new visions of the future into your goals. Enhanced consciousness and interest in unconventional subjects can play a role in your future.

PERSONAL - WISDOM: Journey into Space

This may well be a period of increased social activity and intellectual curiosity. During these months revolutionary new opinions can lead to a radical change in your viewpoint. Contact with foreigners and their cultures can be a catalyst in this process. You may find yourself getting involved with New Age or international groups. This is a great time for inspiration and radical consciousness change, but you may find yourself at cross purposes with people who have traditionally had a strong influence in your life. You have a desire to overthrow intellectual and religious authorities now, and replace restrictive ideologies with ideals about freedom of the individual. You want to define and follow your own path to personal growth at this time, without the heavy hand of any guru or mentor.

Jupiter Transiting Through 4th House

01-01-2003 -> 27-06-2003

PROFESSIONAL - WISDOM: Expanding your roots

You have the capacity at this time to expand your sense of security and feeling of belonging. Success and satisfaction connected with the home and family create the foundation for greater emotional resources in connection with your career. Good fortune can arise connected with land and property, and you may experience increased support from your family.

PERSONAL - WISDOM: Expanding your roots

Other things being equal you have the opportunity to really enjoy family life at this time. Good fortune and surplus energy can be utilised to create even better conditions in your home life. It's a good time for happiness through children, and there are good home-expansion possibilities. The family may also expand. On an inner level you can gain considerable insight into hidden emotional and conditioning factors, and this can enrich intimate relationships.

Jupiter Transiting Through 5th House

28-06-2003 -> 06-09-2004

PROFESSIONAL - WISDOM: Feel good

A long-awaited boost in personal self-confidence can be relied on to give success and recognition in your professional life. If you have creative interests, this is the time to expose your talents to the public eye. Your charisma is at a peak, so it's a question of taking a gamble and believing in yourself. Don't hide your light under a bushel - think positively and expect to win.

PERSONAL - WISDOM: Feel good

Whatever else is going on in your life, you can expect dramatic confirmation of yourself at this time - especially romantically, but also in connection with children and creative ventures. This is a lucky time, and you can expect to be courted and admired. This is partly a result of an increased sense of self-confidence which acts like a magnet on others. You can also expect increased self-knowledge and understanding now. You have an energy surplus which allows you to enjoy life more.

Jupiter Transiting Through 6th House

07-09-2004 -> 31-12-2005

PROFESSIONAL - WISDOM: Finding daily significance

This is a very busy period with the likelihood of expansion of your working commitments both at home and professionally. As such you can learn something about the importance of delegating work. It is your job to maintain an overall view whilst motivating others with respect to the future. Your opinions will be valued at work as long as you are receptive to other people's ideas. There may be expansion possibilities abroad. Take

advantage of all opportunities for promotion now. Plan for the future.

PERSONAL - WISDOM: Finding daily significance

A strong sense of the importance of the small events that make up your everyday life can inspire you at this time. You may find pleasure in the little rituals of life, from cleaning the house to looking after a child. Use your time to occupy yourself with the things which bring you pleasure, and be generous in giving time and attention to those you care for. You can gain insight in health matters now or expand your understanding by going on courses related to the body and mind.

Challenges

Saturn In Libra Retrograde

At birth this planet appeared to be moving backwards relative to the Earth. You will learn special lessons in connection with attachments to people and things from the distant past, and a turning point will arise, at some point in your life, in the matters described.

PROFESSIONAL - SELF-RELIANCE: Social responsibility
Saturn was in this sign in the years 1921-23, 1950-53 and 1980-82. There was a strong emphasis in society on the principles of justice, and on partnership institutions. Expressed in your own career, you may find yourself assuming a professional role in which your judgement and diplomatic abilities are important. You will often find yourself sandwiched between people with differing views, and your word will carry weight in these situations. You are slow to pass judgement, and very concerned about any miscarriage of justice. You are good at dealing with people, and can acquire a position of authority in this respect. Your own role in society is important for you, and professional advancement depends on your overcoming shyness and fears about relating. You can feel a little stiff and formal when dealing with people, but you will quickly win their respect once you let the barriers down.

PERSONAL - SELF-RELIANCE: Social responsibility
There was a general theme around the year of your birth in which commitment to others, particular in relationships, was an important issue. In your own relationships you will strive to overcome selfish needs and discipline yourself to take the needs of others into account before you take action. In this sense you are a person of your word when you make a relationship commitment. You are also characterised by fair-mindedness and patience when it comes to dealing with others. One of the major challenges in your life is to relax more with others, and to drop a defensive formal shield which prevents a deeper, emotional intimacy. Though you are good at dealing with people on a superficial level, you can be at a loss when emotional themes are broached. Though your early life will bring challenges and difficulties in partnerships, deeper devotion arises in your love life as you mature.

Saturn In 6th House

PROFESSIONAL - SELF-RELIANCE: Overcoming burdens
Work and duty play a very important role in your life - although things are never easy in this area. You may feel that you have to work too hard, or that your work does not fulfil you or is too monotonous. Indeed you may have great difficulties with employment in your youth. If you do not have the courage to go for what you dream of doing, you will end up in some inferior position obeying someone else's orders. You have a lot to learn as regards co-operation with others - and this is connected with a defensive attitude at work. You wish to be respected for what you do, but are often not receptive to the feedback - both positive and negative - co-workers give you. You get the hang

of things after the age of 30. If you rise to the challenge of getting down to some formal training, you can become an expert in whatever field you choose. You function well in a role in which you have authority. You are after all a very hard-working person, and employers will appreciate your conscientious attitude. You work economically and are good at making enterprises more efficient. Although you tend to stay in a job for long periods, you will need to make adjustments at work about every 7 years, even though flexibility is not your strong point. If you cultivate an open attitude to the people you work with, and admit to your feelings of professional insecurity, you will be treated with more consideration.

PERSONAL - SELF-RELIANCE: Overcoming burdens
You hate drudgery in your personal life, and often find yourself swamped by everyday tasks. As a child you may have had a lot of domestic responsibilities or family duties. Often you may feel you have to bear unfair burdens. Actually you learn a lot from working hard, because you train yourself to economise with your time and energy. This ability to be efficient will bring professional advantages later on. In relationships remember it is entirely up to you what tasks you do. You tend to automatically take on unnecessary work, because of habits picked up in your childhood as a result of strict parental expectations, and then complain that your partner does not bear his or her load. Be satisfied with things as they are, and plan your time so that you also can relax and enjoy. This will benefit your relationship. During the course of your life you will learn how important it is for your health - both mentally and emotionally - to cultivate a positive attitude to your everyday life.

Saturn Conjunction Neptune

This aspect is extremely powerful in your horoscope, and will be a major feature of your character.

Two energies are unified into one in this planetary aspect, and you will express this energy in a very personal way, for good or ill depending on other factors in your chart.

PROFESSIONAL - SELF-RELIANCE: Dissolution of structure
These two slow-moving planets form rare aspects as part of a 36-year conjunction cycle. Insofar as you express this influence in your professional life, you will be concerned with making dreams real, and bringing visions down to earth. This may be expressed politically, through concerned social work, or perhaps your career will be touched by some other form of contact with the pressing social issues that this aspect symbolises. This can mean dealing with suffering in one form or another, for example loneliness or poverty, old age, alcoholism etc. As regards your own ambitions, you will often feel that you are driven by a deep sense of professional dissatisfaction, and even the goals you attain may seem empty once they are achieved. True meaning is found in some form of service in which you sacrifice personal ambition for a universal cause.

PERSONAL - SELF-RELIANCE: Dissolution of structure
Though this aspect is felt mostly on a collective level, there will be times in your life when you are struck by a deep sense of sadness or tragedy. In some peripheral area of your existence you will encounter deep suffering which will make a lasting impression on your attitude to life - particularly as regards the drive for personal achievement. This kind of experience may tend to make you escapist in one form or another, or you may feel a strong drive to find personal meaning through work, service and sacrifice. During the course of your life you learn to find hope, when things seem most hopeless. You are very aware that personal status and material achievement give no lasting answers to human dissatisfaction; it is the inner, spiritual qualities in existence which count. If you have personal planets contacting this aspect, you will feel the influence very strongly.

COLLECTIVE - SELF-RELIANCE: Dissolution of structure

As Saturn takes a little under 30 years to go around the Sun, and Neptune 165 years, they meet every 36 years. This conjunction cycle is experienced powerfully on a political level as the dissolution of government structures which have outlived their usefulness. This cycle is strongly related to socialism, and the last 3 conjunctions - in 1917, 1953, and 1989 - have seen major changes in Russia for example. If there are serious leaks, the ship of state sinks under this aspect. It evokes in the collective spirit the need to take concrete action to improve the situation of the underprivileged, thus much work will be done on hospitals and the social services at this time. The same combination also has to do with imprisonment, suffering and old age.

Saturn Sextile Pluto

This aspect is extremely powerful in your horoscope; it will dominate many areas of your life.

When reading the following description, please bear in mind that you are a fast learner and overcome any difficulties involved very quickly. You can expect to use this aspect constructively and harmoniously.

PROFESSIONAL - SELF-RELIANCE: Re-evaluate personal power

Normally this influence is felt more collectively than personally. The main issue here is the structure of power - its use and misuse. In your life you are sure to encounter people and organisations who have a powerful position in society, for good or ill. This can for example include the police, tax authorities, corporations or secret organisations. When this influence becomes strong in your life, you will find yourself in a position which requires enormous willpower. This can lead to the overthrow of powerful people, or the collapse and restructuring of powerful institutions. It is your mission to transform the unacceptable use of authority. You also have the capacity to wield power and in doing so reform organisations.

PERSONAL - SELF-RELIANCE: Re-evaluate personal power

You can both be a victim of tyranny, and a person who unconsciously adopts an authoritarian style yourself. The energy you invested in survival early in your life can give you an imposing and even frightening aura. You have to make sure therefore that you use your natural authority to empower rather than weaken others. In intimate relationships you are extremely sensitive to the misuse of power and any sense of helplessness. If you unconsciously overreact in this area it may be you yourself who evokes fear in your partner. In times of crisis you may use the threat of allowing your life structure to disintegrate totally to keep your partner in line. Do not be afraid to be gentle and tender.

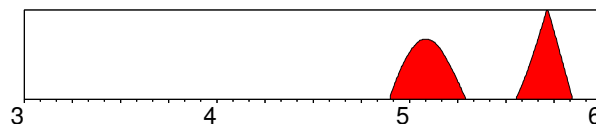
COLLECTIVE - SELF-RELIANCE: Re-evaluate personal power

Saturn orbits the Sun every 29½ years, and Pluto takes 246 years. Therefore Saturn overtakes Pluto every 35 years. Politically this cycle often leads to the restructuring or the painful birth of nations. The conjunction took place in 1914, 1947 and 1982. The first two dates saw the beginning of World War 1, and then the birth of Israel, Pakistan, India (the fall of British colonial power), and, a little later, Communist China. 1982 was the beginning of the disintegration of Lebanon and the nuclear stand-off between USA and the Soviet Union in Europe.

The key issues here are colossal power confrontation with ideologies strongly at variance. Politically there is no way around power battles. Old structures experience their death-throes as they outlive their usefulness. Organisations are stripped to their bare bones. Only by profound surgical cut-backs can new growth take place. Major turning points in this 35-year cycle will take place at approximately 9 year intervals. When you are born under this planetary phase, it can be your destiny to live out the collective idea, by working intensely on

restructuring processes in society.

Jupiter Transiting Conjunction Saturn 26-11-2004 -> 05-11-2005

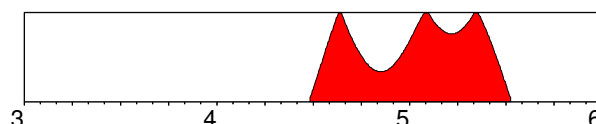


You can expect powerful change in this area, as you learn to integrate the following influence into your life.

PROFESSIONAL - SELF-RELIANCE: Expanding the framework
It is at this time of your professional life that the urge for growth and expansion confronts the forces of inertia in your career, or in society. You get to appreciate the power the establishment has over your life at this time. You are challenged to examine how you limit yourself and your future through restrictive systems or a lack of vision and faith in your abilities. If you can find the balance between learning from past experience yet allowing a future vision to inspire you, you may expect solid and steady growth at this time. It is important to expand within a certain framework and to accept the limitations imposed by professional authorities. If you do this you will be an important cog in the development of your company, or culturally in society.

PERSONAL - SELF-RELIANCE: Expanding the framework
At this time of your life you have the opportunity to loosen some of the bonds that restrict you, and lighten the load which weighs you down. This is the time that you have to adjust the awareness of what is necessary by becoming aware of the art of the possible. Restricting life patterns can be replaced or adjusted by exploring new avenues for the future. Inasmuch as you are hampered by a sense of insufficiency or inferiority as regards your abilities, you can gain renewed confidence and faith in yourself now by defining future goals and working hard to achieve them. You can build a lasting niche for yourself in society at this time by laying new foundations for the future.

Saturn Transiting Square Saturn 27-06-2004 -> 11-07-2005



This is a time of tension and dramatic change which may be most apparent in your domestic life, or in your career. Use the time to make much-needed changes.

PROFESSIONAL - SELF-RELIANCE: Adjusting direction

As Saturn takes 29-30 years to orbit the Sun, it makes a major aspect to itself about every 5 years, and these are times when adjustments of direction and goals have to be made. At the age of 29 to 30 however, a major reorientation is necessary. You have to look carefully at what structures you have built up in your life and why. If you don't make changes now, when can you? Are your ambitions your own, or are you simply fulfilling the expectations of your parents or of authority figures in society?

It is essential to spend some time sensing what it is exactly you want for yourself in life. Cast aside all the unnecessary baggage which you have accumulated in your efforts to carve yourself a professional niche in society. Don't worry about personal status and ambition for the time being, and don't listen to people who tell you what they think is good for you. The older you get the more important it becomes not to waste time pursuing superficial career goals which will be of no benefit in the long run.

PERSONAL - SELF-RELIANCE: Adjusting direction
All phases of the 30 year Saturn cycle are important, although the ages 30, 44, and 52 are perhaps the most significant. These are times when you have a chance to review the passage of time and assess the unfolding of your life. Are you satisfied with the direction it is taking? If not, change it now. Change need not be radical, you just have to define what it is you truly want to spend time on. Remember your responsibility is first to yourself. The biggest gift you can give to others, is to show that you are satisfied with your own life. It is important to weigh the balance between career and family commitments now. Do not be influenced by what other people expect of you - only you can know what it is that you really need in life. The yardstick for decisions at this time is: Imagine you were on your death bed...what then, would you wish you had achieved in your life? The wrong decision now can mean years wasted on unfulfilling work.

Saturn Transiting Through 1st House

01-01-2003 -> 18-04-2003

PROFESSIONAL - SELF-RELIANCE: Establish new life path
After a long period of confusion and seclusion as previous life structures underwent a dissolution process, you will now be able to glimpse the kind of life you would like to build for yourself. Over the last few years, many of the ambitions you have had will have lost their meaning. The goals which you achieved in the past are no longer relevant for your future, and you will probably have discovered that no matter how hard you have strived to create lasting achievements in the recent past, your efforts will have been washed away. However now is the time to plan a new future. Invest in your self. The visions that form now will be realities in a few years. By writing down your plans and making a blueprint for your future, you will ensure later success.

PERSONAL - SELF-RELIANCE: Establish new life path
As you slowly discern your personal path into the future, after the last few years of inner focus and outer lack of direction, it is best now to spend some time defining a new life-path. Responsibilities for others must make way for responsibility to yourself. By looking after your practical interests, paying attention to your body and establishing a program for your future, you can establish a life structure which ultimately means you have something concrete to offer others. People might find you serious and withdrawn, but you have important decisions to make. You know that the direction you choose now will form the basic structure of your future, and that is something to be taken seriously.

Saturn Transiting Through 2nd House

19-04-2003 -> 25-08-2003

PROFESSIONAL - SELF-RELIANCE: Developing resources
At the start of this period you will probably be feeling a great deal of economic pressure. The facts are that you are in a new situation as far as your economy is concerned, there are many weaknesses in the way you work and administrate your resources and you have to spend time and effort to improve the situation, especially as regards budgeting, economising and saving. It is only at the end of this phase that you will begin to see the results of your long-term investments - especially as regards new skills and resources. It is basically a question of tightening your belt, and not expecting too much, too quickly.

PERSONAL - SELF-RELIANCE: Developing resources
Both emotional and economic pressure will undermine your sense of self-worth at this time. Even though this means that at first you will be strongly aware of your weaknesses, and this can be somewhat depressing, you are actually in a phase of your life in which self-improvement efforts will ultimately pay off. At the end of this period you will feel a stronger sense of

personal worth, and this in turn will convince you that you have something to offer those closest to you after all. You are simply building new and more solid foundations for your future now.

Saturn Transiting Through 3rd House

26-08-2003 -> 28-12-2003

PROFESSIONAL - SELF-RELIANCE: Improve communication skills

At the beginning of this period you become strongly aware of any intellectual weaknesses or communication difficulties that you have. You will not be able to avoid challenges in this area, so it is a question of buckling down and disciplining yourself to overcome lack of mental self-confidence. This can for example mean writing the book you have put off, getting the qualification you have so long avoided, or learning to express yourself more clearly. As time goes by you gain more confidence, and you are sure to attain a number of your goals in this area.

PERSONAL - SELF-RELIANCE: Improve communication skills

This is a period when you can improve relationships through improving communication - though at the start of this phase problems and misunderstandings will most certainly arise. This can be connected to your sensitivity as regards your intelligence or spontaneity. Efforts have to be made to gain more confidence in reaching out to others. By developing patience when listening to another, or when explaining matters, you can ensure better understanding. There is plenty of room for improvement in this area. You are challenged to work on neighbourly responsibilities now.

Saturn Transiting Through 2nd House

29-12-2003 -> 13-05-2004

Please read page 16: "Saturn Transiting Through 2nd House"

Saturn Transiting Through 3rd House

14-05-2004 -> 29-09-2004

Please read page 16: "Saturn Transiting Through 3rd House"

Saturn Transiting Through 4th House

30-09-2004 -> 18-12-2004

PROFESSIONAL - SELF-RELIANCE: Work on your foundations

It will be very apparent to you at the beginning of this influence how important it is to work hard to create a secure environment and solid foundation for your life. It will take you a few years now to create and consolidate basic structures connected with your security. This is the time to concentrate on home and property, get building work done and create a stable domestic structure. At the same time this will create order in your professional life. You can expect to be confronted by many difficulties and challenges as you seek to establish new working rules for your professional and private life, but you are aware that a building is only as strong as its foundations, and this is where you have to invest your efforts.

PERSONAL - SELF-RELIANCE: Work on foundations
Emotionally this can be a trying period, and in the beginning there will be many practical factors that undermine your security. Work needs to be done at home and responsibility to the family has to be shouldered - perhaps because this is a time when your partner gets more involved professionally and has less time to spend in the home. Past emotional commitments have to be re-examined, and limits set. Domestic pressure may force you to modify your professional ambitions, and in personal relations emotional issues and blockages have to be confronted. In reality many issues come up now connected with your past - particularly connected with the emotional conditioning of your childhood. Intimate relationships

force you to deal with the emotions that now arise, and you discover that the more emotional depth and commitment there is, the stronger the foundation.

Saturn Transiting Through 3rd House

19-12-2004 -> 13-06-2005

Please read page 16: "Saturn Transiting Through 3rd House"

Saturn Transiting Through 4th House

14-06-2005 -> 31-12-2005

Please read page 16: "Saturn Transiting Through 4th House"

Originality

Uranus In Cancer

COLLECTIVE - ORIGINALITY: Universal family
Uranus takes 84 years to orbit the Sun and is in this sign for 7 years, representing a collective influence on a whole generation. It shows how you are most influenced by revolutionary attitudes in society. When the Ascendant is in Aquarius this influence will be expressed in a more personal way.

Uranus went through this sign from 1949 to 1956, and will do so again from 2033 to 2040. Politically this brings new concepts of patriotism, with isolationist tendencies on the one hand, and new political alliances and loyalties on the other. On the social front there are great changes in the public view about the family unit and challenges to the traditional idea of family as a stable institution.

If this influence happens to be personalised in your horoscope, you will have experienced dramatic and unpredictable developments in your own upbringing, which will affect your attitude to social and family bonds later in life. You may manifest your uniqueness through some unusual event or personal style in connection with your own family - in particular a tendency for communal living. You may also have the ability to take in your stride radical change in the family or sudden moves of home.

Uranus In 3rd House

PROFESSIONAL - ORIGINALITY: Break new mental ground
You have an number of unusual mental talents and interests. Being the type who learns things best by experimentation you don't do so well in a conventional learning environment. You have a low threshold for boredom, and your attention wanders. Yet you are inspired by new horizons and unconventional ideas, and as such you are suited to a career which requires a willingness to be inventive and explore - or perhaps a job connected with electronics, computers, the telephone or the media. Long-distance travel and mental contact with people from other cultures will probably appeal to you. There may a talent for exotic languages.

PERSONAL - ORIGINALITY: Break new mental ground
Unusual childhood circumstances were present connected with sibling relationships and your early education. There may have been a sudden interruption of your schooling, and perhaps a separation from a brother or sister. Events in this connection have a radical effect on your mental attitude. In communication you have many original and perhaps weird and provocative ideas. If you pay close attention to the way you communicate, you may find that you have a tendency to interrupt, or to go off at an angle when talking. There may be deep reasons for this connected with the desire to be listened to.

Uranus Sextile Sun

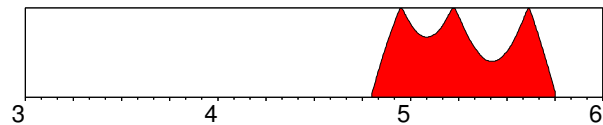
Please read page 4: "Sun Sextile Uranus"

Uranus Square Venus

Please read page 9: "Venus Square Uranus"

Jupiter Transiting Square Uranus

20-10-2004 -> 03-10-2005



This is a time of tension and dramatic change which may be most apparent in your domestic life, or in your career. Use the time to make much-needed changes.

PROFESSIONAL - ORIGINALITY: The future now

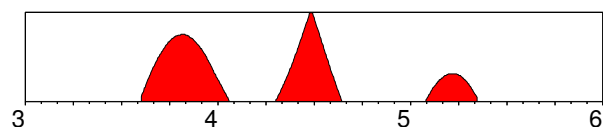
This is a time when insight and awareness of the future should be a force of inspiration and renewal in your professional life. Expect a dramatic increase in your horizons - either through long-distant travel and contact with exotic lands or peoples, or through mind-expanding activities connected with consciousness growth. Progress in your career depends on your ability to think in completely new channels and harness modern methods - both as far as technology is concerned, but also concerning revolutionary methods. This is a time of exciting possibilities and great inventiveness. The urge to be free and uncommitted may well have to be given priority over personal ambitions now.

PERSONAL - ORIGINALITY: The future now

During this period of excitement and unpredictability, you have a strong desire to expand the boundaries of your consciousness. Contact with foreign lands and cultures can blow your mind, and experiences on untraditional training courses or with experimental groups can give you a new sense of destiny or insight into transcendent aspects of your life. This is a good time for astrology and New Age interests, and to meet people who share special interests. So experiment, take a few risks and loosen your bonds - you need to allow the unknown and unexpected to happen.

Saturn Transiting Conjunction Uranus

09-08-2003 -> 07-05-2005



Major changes will occur in the area of your life described here and you will integrate new personal behaviour and attitudes in your life.

PROFESSIONAL - ORIGINALITY: Limiting individualism

This influence may not be so obvious in your life, unless you have strong Aquarius characteristics. It is a time when it pays to make constructive use of modern techniques in your career, or perhaps pursue interests connected with exotic cultures or people. Concrete work on untraditional or new age interests is also favoured. You will probably find that you will have to make some compromises with your tendency to be an outsider and to hold society at arm's length. It pays to build a bridge between old traditions and modern trends. Social idealism and commitment is favoured.

PERSONAL - ORIGINALITY: Limiting individualism

During this phase of your life, you will find that you have to take more responsibility for those sides of your nature which are

outrageous or provocative. Authority figures will demand more self-discipline and social awareness, and you will not be permitted to merely indulge your extremist views. However this is a good time to develop your interests in original and untraditional subjects, new age matters, and global awareness, especially if you have constructive plans in these fields. This may be a time when you will want to make a more formal commitment to an unusual group.

Transcendence

Neptune In Libra Retrograde

Because this planet was retrograde when you were born, you have a special personal lesson to learn in the matters described. Experiences will be evaluated more on an inner than outer level.

COLLECTIVE - TRANSCENDENCE: Cosmic balance
Neptune takes 165 years to orbit the Sun, and approximately 14 years to go through one sign. Its influence affects a whole generation, and is associated with a new sensory and spiritual awareness, and greater compassion, in connection with the sign it is in. For most people this influence is experienced on a collective level, but those who have their Ascendant in Pisces will express it in a personal way in their lives.
Neptune was in Libra from 1778 to 1793, and again from 1942 to 1955. There was an especial concern with justice and equal rights in these periods, with a strong idealism concerning equality before the law, and between the sexes. There was a strong tendency to over-idealise partnership in the media, whilst the institution of marriage was undermined in public life. Politically there is a strong emphasis on the balance of power, with grotesque distortion of opposing factions.
If you channel this collective influence in a personal way, you will have many unrealistic ideals about love combined with great hopes for happiness in relationships. You will however be profoundly influenced by the dissolution of relationships around you, and a need will arise to redefine the importance of partnerships in your own life. You may however have a very refined talent for dealing with other people, partly because you have a compassionate nature and genuine interest in others. You believe in being on an equal level with others.

Neptune In 6th House

PROFESSIONAL - TRANSCENDENCE: Everyday rituals
You have some very specific talents that can be useful in your professional life. There may be a knowledge of chemicals, liquids, photography, the ocean or advertising. You like to be able to lose yourself in your work - either through being creative, through watching magical processes, or because you can be of help to humanity in some way. You are inspired by the idea of service and sacrifice for the benefit of others. Often you will find situations developing at work which are beyond your control. In the long run you will find that work which does not offer spiritual or creative perspectives will render your life meaningless. Periods of unemployment can actually be beneficial for you, even though you may feel helpless, because they help you meditate on what is really important for you, and how you can be most useful in your life. You need to be able to work alone or at least have a pure and peaceful working environment.

PERSONAL - TRANSCENDENCE: Everyday rituals
You are motivated by the spirit of service, but this may mean you do not know where to draw the line as regards work-sharing in partnerships. If you do not set a limit for what you do, you may end up being overloaded with work. You tend to have sloppy work methods, and you would benefit greatly from more efficient planning. Being inefficient is an unconscious tactic

effectively preventing other people making demands on you. Being helpful is no help to anyone if you do not take your own needs into accounts. Health problems will often be mysterious or difficult to identify - your body obviously knows how to set limits when you fail to do so yourself. You may have certain talents for healing as a result of an intuitive ability to tune into the physical, mental and spiritual needs of other people.

Neptune Conjunction Saturn

Please read page 14: "Saturn Conjunction Neptune"

Neptune Sextile Pluto

This aspect is extremely powerful in your horoscope, and will be a major feature of your character.
The sextile aspect is favourable, and stimulates your capacity to learn from experience. You can expect the negative effects to be minimal.

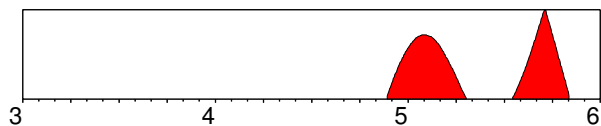
PROFESSIONAL - TRANSCENDENCE: Mass vision
These aspects are very rare and last a very long time. Indeed, as Pluto moves within the orbit of Neptune in the closing years of the 20th century, the present sextile aspect between the two planets lasts from 1940 to 2040 - one hundred years - so almost everyone has it! If you are able to manifest this influence on a personal and professional level (through powerful contacts in your own horoscope), it may be connected with a deep spirituality and creativity. There can be talent for dealing with the media and wide-ranging themes connected with the masses. Material issues will be less important for you than the realisation of a collective dream. There can be clairvoyant powers, and abilities connected with dreams, symbols and visualising. In industry there can be a talent for dealing with oil, the film industry or the transforming power of collective visions.

PERSONAL - TRANSCENDENCE: Mass vision
If you have this influence powerfully evoked by other factors in your horoscope, you will be deeply affected by spiritual issues, and constantly seeking to refine your consciousness. At these times you are likely to experience great personal disorientation and confusion, as old dreams and visions are replaced by new, deep psychological insights. Inner growth will have major priority in intimate relationships. During periods of your life you will undergo deep transformations in which your fantasy and imagination will play a powerful role. It is essential to learn to use your imagination in a positive way by learning about the power of the unconscious.

COLLECTIVE - TRANSCENDENCE: Mass vision
The Neptune/Pluto planetary cycle is connected with spiritual evolution on Earth and whole generations share this present harmonious aspect which - lasting as it does from 1940 - 2040 - is connected with a deep spiritual transformation process affecting the whole of human consciousness.
Neptune catches up with Pluto every 492 years, in what can be considered a spiritual seeding period for our planet. New collective ideas emerge at the start of this cycle, evoked by sudden developments of the technology and discoveries of the time. The major conjunctions since the birth of Christ were 411 AD, (disintegration of Roman empire), 904 AD, 1398, and 1891-2. This last conjunction in the sign of Gemini may therefore partly relate to the revolution of transport (flight and automobiles) and communication (radiowaves) which has such immeasurable effects on our consciousness today.

Jupiter Transiting Conjunction Neptune

23-11-2004 -> 03-11-2005



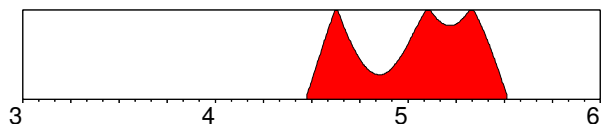
Major changes will occur in the area of your life described here and you will integrate new personal behaviour and attitudes in your life.

PROFESSIONAL - TRANSCENDENCE: Balloons and bubbles
You will experience a tremendous stimulation of your imagination at this time, and this can be used to advantage if you can harness your fantasy to some creative work, especially in connection with music, imagery and the arts. If being realistic is an integral part of your career, take care. Your idealism and dreams peak at this time, and this can seriously affect your judgement. Your imagination can be gripped by great hopes, and you have a tendency to attach your hopes to a bubble which expands and expands until it bursts. Inspiration is OK, but make sure that you do not get carried away into a world of dreams. Listen to the voice of reason, and work in stages with verifiable goals.

PERSONAL - TRANSCENDENCE: Balloons and bubbles
If you are a dreamer, this is the time when your dreams take wing and carry you into surreal landscapes. If you do not want your hopes to be dashed, you must be aware of your limits and let yourself be guided by common sense. Great hopes will often turn out to be illusory, so don't let your imagination get out of control. However this is an excellent time for developing your imagination and your visualisation power. If you choose you can enrich your life with great spiritual insight, and gain a subtle knowledge about the nature of reality and the illusion of identity.

Saturn Transiting Square Neptune

24-06-2004 -> 07-07-2005



Major irritation factors arise as a result of this influence, yet if you use this period to initiate dynamic change you will be able to make dramatic progress in your life.

PROFESSIONAL - TRANSCENDENCE: Making dreams concrete
This influence may not be felt very strongly, unless you have a strong Pisces influence in your horoscope. It can be difficult to make concrete plans now, things tend to flow in an uncontrollable way, goals slip through your fingers. Instead of making strategies and long-term goals it would be an advantage to do something constructive with your creative talents. Your greatest asset at this time is your imagination, so try to think of practical applications for creative ideas. If you act in a determined manner you can realise many of your dreams and visions now. This is an excellent time for helping people who are losers in society.

PERSONAL - TRANSCENDENCE: Making dreams concrete
This is a time when you will probably feel rather alone and isolated. Money may be short, and security even shorter. You are forced to develop your inner resources now, because outer structures in your life tend to dissolve. This is a good period for developing spiritual discipline, or making long-term plans for creative development and growth. But otherwise there is a tendency to be down-and-out, or on the fringe of society. Nevertheless you may feel moved to take more responsibility

for those who suffer now, or to make some sacrifice for others. Avoid negative frames of mind, or tendencies towards alcohol or pill misuse.

Transformation

Pluto In Leo

COLLECTIVE - TRANSFORMATION: Individual power
Pluto has an irregular orbit around the Sun which takes about 248 years. When Pluto is closest to the Sun it takes only 12 years to traverse a sign. When it is furthest away, it takes approximately 30 years. Its influence is felt collectively on a very deep level in society, bringing trauma, transformation and renewal in regard to the sign it is in. Individuals with their Ascendant in Scorpio may express this influence in a personal way, otherwise its effect is expressed as an underlying influence on a whole generation.
Pluto was in Leo from 1693 to 1711, and again from 1939 to 1957. These were times of power politics with charismatic leaders wielding dictatorial power. This was a period in which power was concentrated in the hands of an elite, and when hero-figures played an important formative role on the national psyche. Entertainment became a new force to sway the masses, and a new freedom based on increased leisure put the emphasis on individual development and self-realisation. If you express this influence in your personal life, you will have a forceful character and charismatic influence on others. You have very strong personal convictions and principles, which you will express in an uncompromising way. Being a natural leader, you resent being bullied by anyone in authority, though you can be rather autocratic yourself. A series of identity crises during the course of your life - perhaps because of events concerning children or love-affairs - will lead to radical changes in direction as you redefine your goals in life and your attitude to personal power.

Pluto In 5th House

PROFESSIONAL - TRANSFORMATION: Transforming self-expression
You can make a powerful impression on others, and this can be both a blessing and a curse in professional matters. You may be too concerned with power and impact on others, and this can prevent you from gauging their reactions. Your anxiety concerning the way you present yourself can obscure the actual goal you are trying to achieve. Rest assured people are impressed, and relax - otherwise you will exhaust others with your presence. You have enormous resources when dealing with children, especially those with psychological problems. On the outside nothing appears to faze you; on an inner level you exert superhuman self-control. You are inscrutable and may have a future in playing poker.

PERSONAL - TRANSFORMATION: Transforming self-expression
A trauma from early childhood often makes you overcompensate when you express yourself - you can be overly forceful. In love a desperate need to be respected as an individual drives you into intense affairs which often turn out to be traumatic - perhaps because you demand the impossible instead of relaxing and giving love. You may put yourself in a position where you end up humiliated, or conversely where you have all the power. A deeper self-knowledge and psychological insight helps you avoid exhausting experiences in this area. Having children tends to awaken anxiety in you - for example a completely unfounded fear of accidents etc. You have to learn to trust in the universe as regards the fate of your children, otherwise you could exhaust yourself fighting shadows. You may find yourself in a relationship in which you have to be a parent of a child who is not yours biologically. Although this can

be an alienating process, this kind of parental role may mirror how you felt as a child, and as such can have a healing influence.

Pluto Sextile Saturn

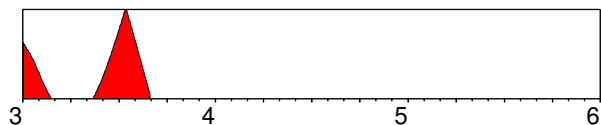
Please read page 15: "Saturn Sextile Pluto"

Pluto Sextile Neptune

Please read page 18: "Neptune Sextile Pluto"

Jupiter Transiting Conjunction Pluto

01-01-2003 -> 30-08-2003



You can expect powerful change in this area, as you learn to integrate the following influence into your life.

PROFESSIONAL - TRANSFORMATION: Power play

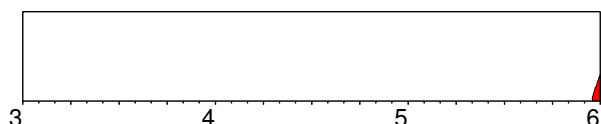
During this period you will be initiated into the use of power and secrecy in the professional sphere. This may be because you discover hidden factors, corruption or power misuse behind some professional facade, or it may be because you learn to harness your own personal power or psychological insight in your career. Whatever the circumstances you may feel a certain anxiety because of circumstances seemingly beyond your control. Make sure you are on good terms with legal and financial authorities, or at least cover your tracks if you aren't!. Big money can be involved during this period, involving large gains or losses, so make sure you have the best financial advice.

PERSONAL - TRANSFORMATION: Power play

There is a leap in your awareness of the power of the unconscious to shape your life at this time. You may choose to develop your emotional insights by learning more about psychology in one way or another. If you have any hidden anxieties or phobias you can expect them to be more acute or to come to the surface now. Even though this may be disturbing, there is a unique opportunity to understand the secret mechanisms of your mind and to eliminate the negative effect of repressions. You can become the intrepid explorer of some very dark territory indeed.

Jupiter Transiting Square Pluto

18-12-2005 -> 31-12-2005



Please read page 20: "Jupiter Transiting Conjunction Pluto"

Destiny

N. Node In Aquarius, S. Node In Leo

PROFESSIONAL - DESTINY: All is vanity

The early part of your professional life is characterised by a need for prominence and recognition. You expend a lot of energy selling yourself, attracting attention and trying to create a good impression. You may be especially concerned about personal creativity, struggling to express the essence of your identity in what you do. As such you are extremely sensitive to criticism and anything which undermines your ego. As you mature the need for fame subsides, and selfish creative urges

are submerged by an acceptance of the importance of integration. You attain respite from the demands of the ego by involving yourself in ventures which are for the common good, and you find that your natural leadership qualities function much better when you are inspired by the needs of a group. Contact with foreign cultures can bring a turning point in your professional life.

PERSONAL - DESTINY: All is vanity

During the course of your life you have to struggle with an inner identity dilemma which brings a transition from egocentric behaviour to a more dispassionate commitment to the group. When young you wish to taste life to the fullest. The world can seem like an entertainment supermarket where you can indulge your pleasures. You expend a great deal of energy on love affairs, conspicuous consumption, luxury pursuits and the like, and you may build up quite an image for yourself. As you mature however, vanity is seen to be nothing but vexation of the spirit, pleasures seem hollow, the flame of your identity burns down. You are destined to go through a rather dramatic process of self-realisation which evokes a more humble attitude in you. A need arises to involve yourself with others and offer your services to enhance the energy of the group. Humanitarian interests replace self-indulgence, and you find fulfilment and meaning when you embrace a shared goal with others.

N. Node In 10th House, S. Node In 4th House

PROFESSIONAL - DESTINY: Release from family

As you mature your professional ambitions will assume a growing importance for you. Perhaps you feel a sense of destiny as regards career - at any rate you have a role to perform in society which can have significance for other people. You will undoubtedly find that you have to overcome enormous domestic pressures on your journey, but it serves no purpose to allow these pressures to completely dictate the speed of your progress. No one benefits in the long run if you allow family interests to have priority. Your work may give you a high individual profile and as a consequence you develop a strong sense of responsibility and awareness of personal influence.

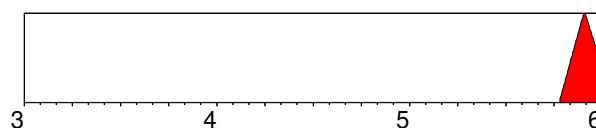
PERSONAL - DESTINY: Release from family

Parental and family values have a powerful influence on you, and you may feel a strong desire to centre your life around home, family and children at an early age. However these areas can never satisfy you fully. You can only develop when you tear yourself away from the constant distractions of family life and define new goals for yourself. You do your family a favour when you go out into the world and realise yourself. You will often feel split, and you will always be conscious of family needs, but this should not deter you in your search for fulfilment. Family issues will exert a constant pull on you, but being the traditional homebody is not your destiny. It is your influence on the larger world stage that has greatest significance in your life.

Jupiter Transiting Square N. Node,

Jupiter Transiting Square S. Node

15-10-2005 -> 31-12-2005



This is a time of tension and dramatic change which may be most apparent in your domestic life, or in your career. Use the time to make much-needed changes.

PROFESSIONAL - DESTINY: Understanding karma

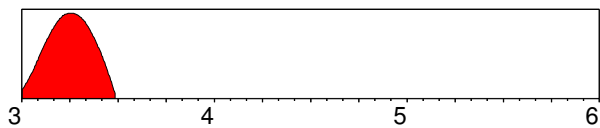
You can expect an expanded circle of contacts at this time, with a special emphasis on people who are seeking influence on a large scale in society. Opinion-makers, advisers and foreigners

can bring a new perspective in connection with future planning. You may feel that your destiny is interwoven with some larger plan. Greater awareness of the direction you wish your life to take can mean making a few adjustments. Do not let inflated ideas about your destiny or personal importance lead you astray.

PERSONAL - DESTINY: Understanding karma

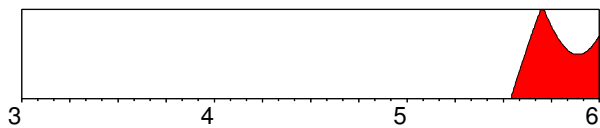
This is a time when meetings have particular significance in terms of karma and your growth as an individual soul. You may have a powerful experience connected with some group activity now and gain greater insight into your soul and your fate as a human being. There is also a strong tendency to be drawn into a web of spiritual illusions - though you will surely also have rewarding experiences. You are drawn to partners who have a deep significance for you now, for good or ill.

Jupiter Transiting Opposition N. Node, Jupiter Transiting Conjunction S. Node 01-01-2003 -> 27-06-2003



Please read page 21: "Jupiter Transiting Square N. Node"

Saturn Transiting Opposition N. Node, Saturn Transiting Conjunction S. Node 20-07-2005 -> 31-12-2005



This extremely strong influence can bring change, dilemmas or separation. The likelihood of travel in connection with these issues is strong.

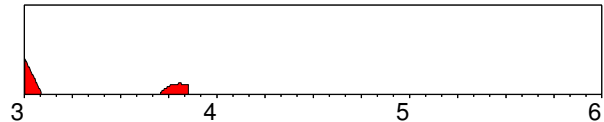
PROFESSIONAL - DESTINY: Group responsibilities

This period is characterised by a professional commitment with a group and the responsibilities that this commitment involves. The interests of the collective may turn out to be more relevant for your career development than your own ambitions or desire for status. Older people in authority may impose limitations on your development, and you can experience a compelling need for greater self-discipline to deal with the demands made on you. The decisions made now can have an important formative effect on your destiny. Benefit comes through subordinating ego needs for the good of others, and accepting the hand of fate, as it moves in your career.

PERSONAL - DESTINY: Group responsibilities

This is a time when time will stand still for a while, so that you can take stock of your ambitions and goals in life and see where they have led you. It is a fateful period in which your responsibilities to others and your role in society can become very important. Some people feel that their life direction leads to a blind alley in these months, or that plans for the future are futile and empty. There is benefit to be attained through inner spiritual discipline, as the hunger felt at this time can not be satiated by outer success.

Neptune Transiting Conjunction N. Node, Neptune Transiting Opposition S. Node 01-01-2003 -> 08-11-2003



Major changes will occur in the area of your life described here and you will integrate new personal behaviour and attitudes in your life.

PROFESSIONAL - DESTINY: Tuning in to Nature

This influence is rather subtle in effect. It may bring you into contact with groups of people who on the one hand are interested in the forces of the media, marketing and advertising, and on the other spiritual growth in one form or another. If you do get involved in a new kind of group at this time, take care that your expectations do not exceed the capacities of the group. It would be an advantage to adjust professional interests so that you can reach a wider spectrum of people by appealing to their hopes and dreams, and their need to acquire more meaning and understanding in life. You can sell a dream to the masses. This is also an excellent time for working on your ideals for society and the environment, especially concerning pollution.

PERSONAL - DESTINY: Tuning in to Nature

This rather subtle influence can enable you to question the path you are taking in life and to make adjustments - particularly as regards life-goals and spiritual interests. Meetings with unusual people can both inspire you and confuse you. You may receive group guidance now, but contact with questionable people can also lead you astray. By integrating your hopes and ideals into the vision of your destiny, you can attune yourself to the highest potentials for soul growth. You must use your powers of discrimination to discern the correct path now, as you easily lose your way because of misleading and time-wasting signposts.

Planetary Symbols and their Meanings

THE SIGNS

♈	ARIES	Spontaneous activity	Ruler Mars
♉	TAURUS	Consolidation, stability	Venus
♊	GEMINI	Duality, communication	Mercury
♋	CANCER	Receptivity, nurturing	Moon
♌	LEO	Self-realization, creativity	Sun
♍	VIRGO	Organisation, analysis	Mercury
♎	LIBRA	Balance, relating	Venus
♏	SCORPIO	Intimacy, penetration	Pluto/Mars
♐	SAGITTARIUS	Knowing, expanding horizons	Jupiter
♑	CAPRICORN	Responsibility, striving	Saturn
♒	AQUARIUS	Humanitarian, consciousness	Saturn/Uranus
♓	PISCES	Selflessness, spirituality	Jupiter/Neptune

THE PLANETS

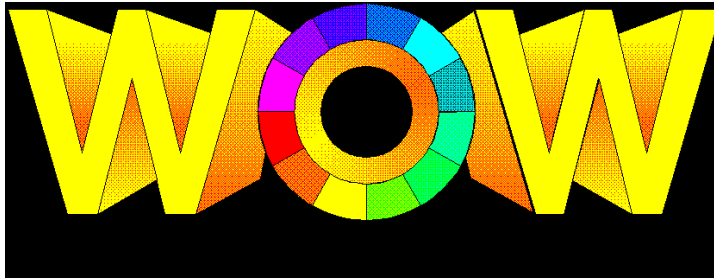
#1	THE SUN	Identity, individuality, the father
#2	THE MOON	Instincts, the unconscious, the mother
#3	MERCURY	Mentality, communication, siblings, travel
#4	VENUS	Love, romance, partnership, values, women
#5	MARS	Drives, sexuality, men, brothers, desire
#6	JUPITER	Wisdom, vision, expansion, convictions, space
#7	SATURN	Challenge, concentration, restriction, time
#8	URANUS	Originality, renewal, revolution, eccentricity
#9	NEPTUNE	Transcendence, spirituality, illusion, suffering
#:	PLUTO	Transformation, humiliation & power, underworld
#;	NORTH NODE	Destiny, group involvement, future potential
#<	SOUTH NODE	Past karma, deep experience, lessons learned

THE HOUSES

1st	HOUSE	Self absorption, personal projection, appearance
2nd	HOUSE	Values, self worth, finances and assets, security
3rd	HOUSE	Travel, local network, siblings, communication
4th	HOUSE	Foundations, family, ancestors, home atmosphere
5th	HOUSE	Self-expression, children, identity security, play
6th	HOUSE	Service, working environment, health, integration
7th	HOUSE	Partnership, dealings with others, adversaries
8th	HOUSE	Others' resources, inheritance, secret powers, death
9th	HOUSE	Long-distance travel, beliefs, higher education, law
10th	HOUSE	Ambitions, authorities, goals, professional expression
11th	HOUSE	Social affinities, groups, friendships, political visions
12th	HOUSE	Withdrawal, isolation, the divine, the inner worlds

ASPECTS

♌	CONJUNCTION	Fusion of energy, unity, singularity
♍	OPPOSITION	Separation, projection, split, polarity
♎	TRINE	Harmonious resources, creativity, insight
♏	SQUARE	Disharmony, diverging needs, conflict
♐	SEXTILE	Mental and social resources, creative harmony
♑	QUINCUNX	Servility, compulsiveness, lack of integration
♒	SEMISQUARE	Hidden tension, selfish antisocial tendencies
♓	SESQUISQUARE	Compulsive behaviour, power trips
♈	SEMISEXTILE	Either material or spiritual drive for integration



TONY BLAIR

This horoscope is your personal cosmic fingerprint. No other person will have exactly the same combination of influences, unless they were born in the same second and exactly the same place as you were.

With 10 planets, 12 signs of the zodiac and 12 houses there are approximately 1500 simple combinations in the horoscope, and when you add to that the different degrees and combinations between planets there are tens of thousands of influences which have to be weighed and juggled in any astrological interpretation. No computer programme can do this satisfactorily.

THE DIFFERENT SECTIONS

World of Wisdom is designed to simplify this process. It indicates for example the relative strengths of different planetary influences to help the reader's judgement. Furthermore this written report is divided up into sections on identity, emotions, mentality, love and sexuality to eliminate apparent contradictions which arise in the character description. But the reader must bear in mind that contradictions will arise. People are complex and contain many contradictory traits. Diametrically opposed character descriptions will either reflect inner dilemmas or outer conflicts reflected in the behaviour of others.

PROFESSIONAL OR PERSONAL PROFILE

Each interpretation can be divided into two main sections: the professional and the personal. The professional section addresses the questions: "What talents do I have?" and "How can I use this ability?". The personal section is concerned with relationships and hidden psychological causes, and addresses the question: "How can I improve myself in this area?"

PAST, PRESENT & FUTURE

This basic module of World of Wisdom also contains a dynamic module and therefore goes beyond a static analysis of personal character. By activating the dynamic module the unfolding of the horoscope through time is described. By analysing the current trends, it is therefore possible for the reader to gain insight into events just past, events happening at the present moment and trends in the future.

It is our hope that the written report will give those who do not have the time to bury themselves in the study of astrology, the opportunity of gaining insight into both their professional and personal life.

ADRIAN ROSS DUNCAN, ASTROLOGER

TABLE OF CONTENTS:

Wheel + Info	2
Life Path	3
Identity	3
Emotions	6
Mentality	7
Values	8
Drives	10
Wisdom	12
Challenges	14
Originality	17
Transcendence	18
Transformation	19
Destiny	20
Planetary Symbols and their Meanings	22

World of Wisdom
Horoscope Interpreter

<http://world-of-wisdom.com>